

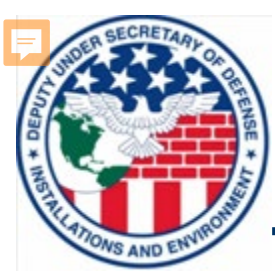


The Department of Defense: Transforming the Business of Military Cultural Resource Data

Brian Michael Lione
Deputy Federal Preservation Officer
Department of Defense

*DataPalooza: State And Federal Applied
Technology In Support Of Cultural Resource Management
Society for American Archaeology
April 29, 2006*

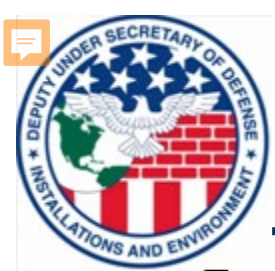




Overview

Acquisition, Technology and Logistics

- Department of Defense Inventory of Cultural Resources
- DoD-wide Data Management Initiatives: DISDI
- Military Service-Specific Applications: MCRAD
- The Future of DoD Cultural Resource Data Management

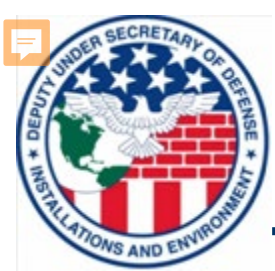


DoD-Managed Archaeological Sites (FY2005)

Acquisition, Technology and Logistics

From data submitted for the fiscal year 2005 Sec. Interior's Report to Congress

Total DoD Acreage (incl. Army Corps)		Approx. 41,000,000
Military Service	Total # Recorded Sites	Total Acres Inventoried
Department of the Army	68,605	5,713,447
Department of the Navy (incl. Marine Corps)	17,788	943,656
Department of the Air Force	15,784	1,692,191
Army Corps of Engineers	53,467	3,614,372
DoD-wide	155,644	11,963,666 (29% of total)

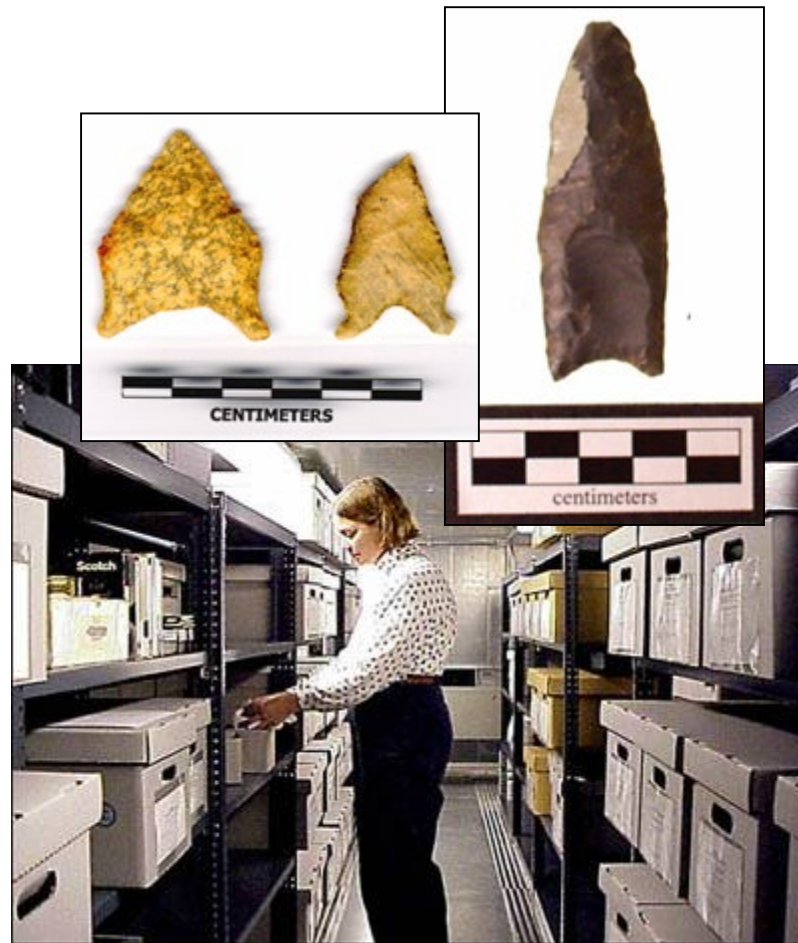


DoD's Inventory of Cultural Resources

Acquisition, Technology and Logistics



Archaeological Resources - Coso Rock Art National Historic Landmark District; China Lake Naval Air Weapons Station, CA



Archaeological Collections and Associated Records – Fort Bragg, NC (top); Fort Riley, KS (bottom)



DoD's Inventory of Cultural Resources

Acquisition, Technology and Logistics



Site – 16th century Spanish fort; Parris Island, SC



Object – Titan II Launch Facility, Vandenberg AFB, CA



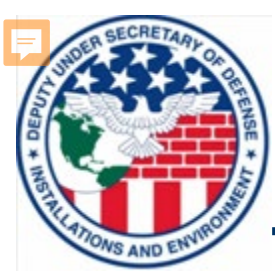
District – Ft Monroe National Historic Landmark District, Hampton, VA



Building – The Pentagon, Arlington, VA



Object – USS Constitution, Boston, MA

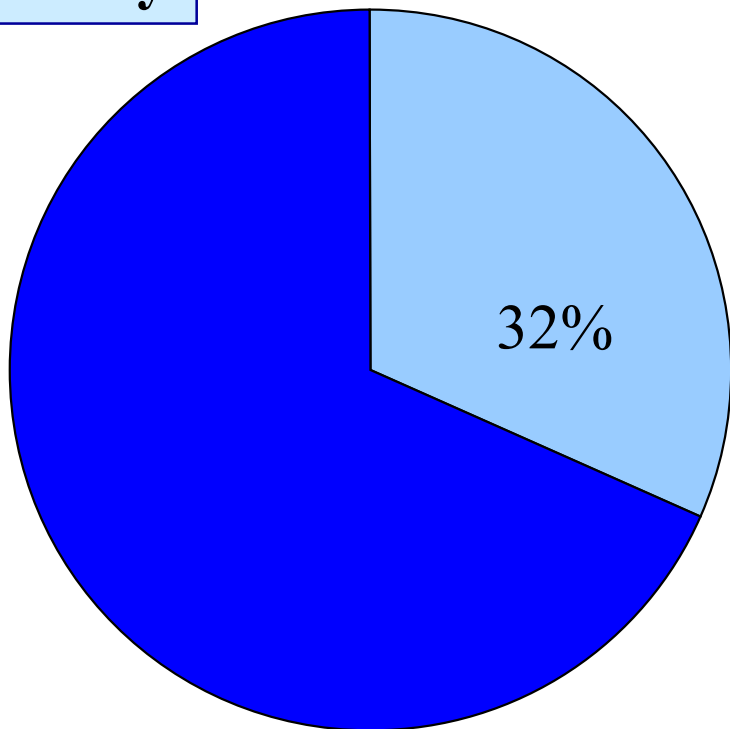


DoD Historic Buildings and Structures (FY 2005)

Acquisition, Technology and Logistics

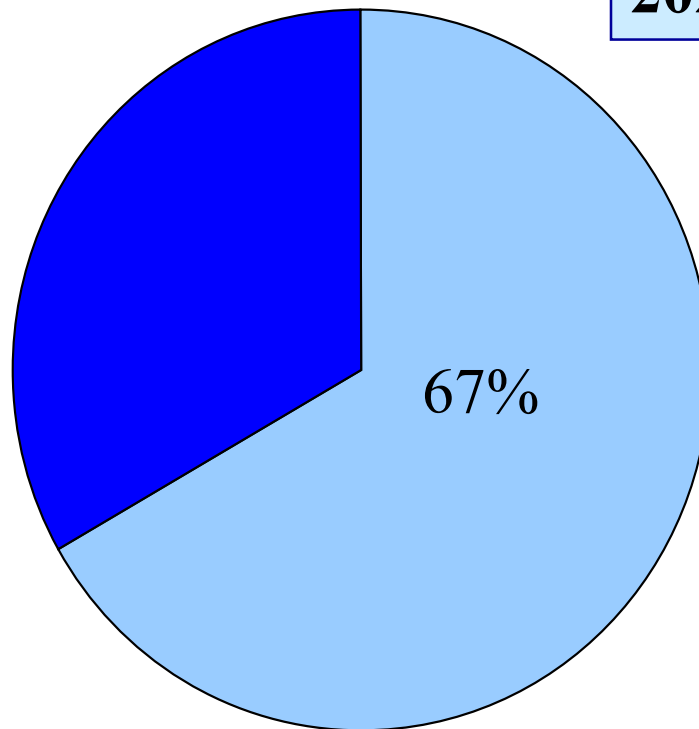
344,950 Buildings in the DoD Inventory

Today

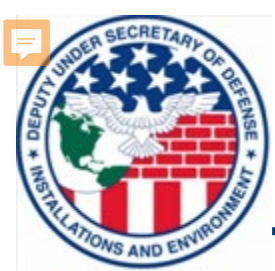


■ Over 50 Years Old
■ Under 50 Years Old

2025



■ Over 50 Years Old
■ Under 50 Years Old

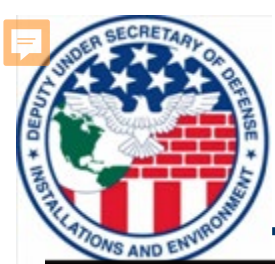


DoD-wide Data Management Initiatives: DISDI

Acquisition, Technology and Logistics

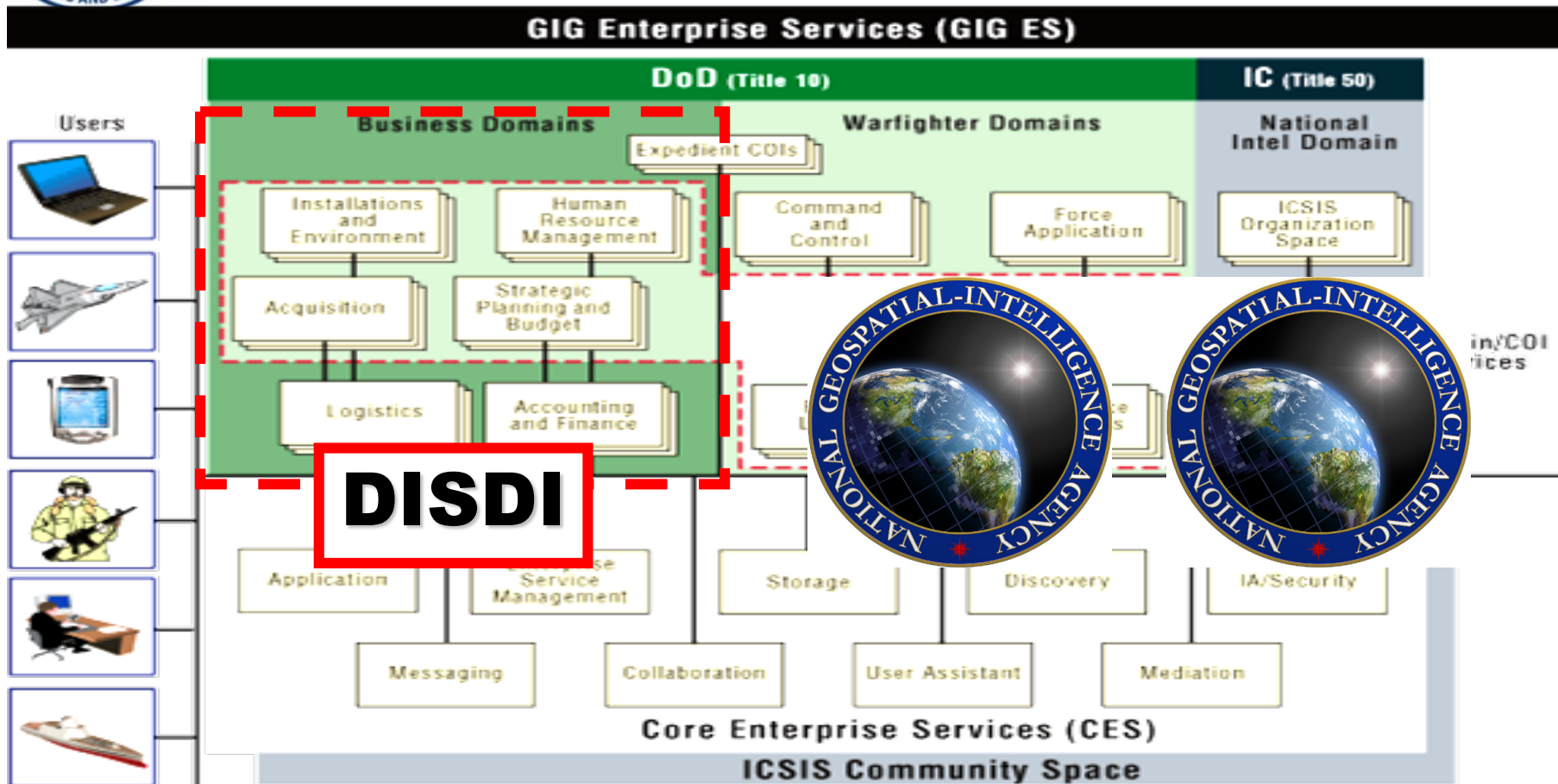
“A DoD mission capability comprised of those people, policies, and practices necessary to acquire, steward and share installation, environmental, and range geospatial data assets for defense, federal, and national goals”





Spatial Information Management Across DoD Global Information Grid (GIG) Mission Areas

Acquisition, Technology and Logistics

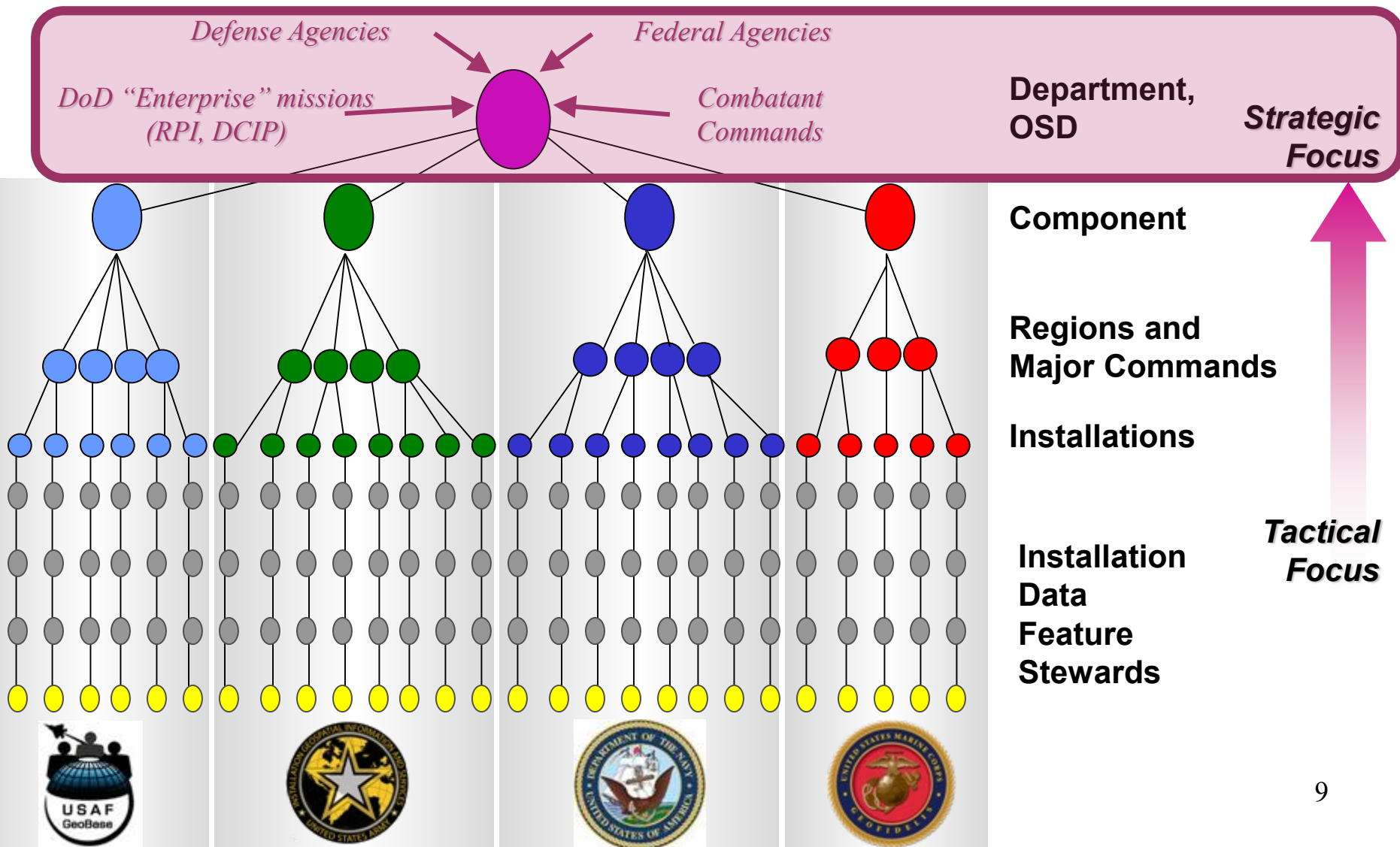


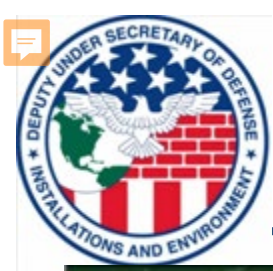
- **Business Mission Area**
- Warfighter Mission Area
- Intelligence Mission Area



DISDI Data Sharing Concept of Operations

Acquisition, Technology and Logistics





DISDI Portal

Acquisition, Technology and Logistics

OFFICE OF THE DEPUTY UNDER SECRETARY OF DEFENSE
INSTALLATIONS AND ENVIRONMENT
DISDI Portal

Home | Viewer | Zoom To | Metadata | Results | Services | Help | Feedback

Installation Locations

- Installation and Range Locations
- Base Structure Report
- Formerly Used Defense Sites

Installation Layers

- Installation Boundaries
- Noise Zones
- Accident Potential Zones
- Floodplains (100 Year)
- Wetlands
- Runways

Range and Training Layers

- Range Complex Boundaries
- Special Use Airspace - Low Altitude
- Special Use Airspace - High Altitude
- Military Training Route

Imagery

- Blue Marble
- Natural View
- IVT

Environmental Layers

Reference Layers

CONUS Map

Reference Map

Legend

- Air Force
- Army
- Marine Corps
- Navy
- Washington Headquarters Services
- Air Force
- Army
- Marine Corps
- Navy
- Washington Headquarters Services
- States
- County

Lat: 31.71 Lon: -120.69 Scale 1: 3,923,814 Go

Zoom to Major Installation, Site or Range:
- Choose Installation -

Use "Zoom To" Tab for complete list of installations & ranges



DISDI Portal

Acquisition, Technology and Logistics

OFFICE OF THE DEPUTY UNDER SECRETARY OF DEFENSE
INSTALLATIONS AND ENVIRONMENT
DISDI Portal

Home Viewer Zoom To Metadata Results Services Help Feedback

Installation Locations

- Installation and Range Locations
- Base Structure Report
- Formerly Used Defense Sites

Installation Layers

- Installation Boundaries
- Noise Zones
- Accident Potential Zones
- Floodplains (100 Year)
- Wetlands
- Runways

Range and Training Layers

- Range Complex Boundaries
- Special Use Airspace - Low Altitude
- Special Use Airspace - High Altitude
- Military Training Route

Imagery

- Blue Marble
- Natural View
- IVT

Environmental Layers

Reference Layers

CONUS Map

Reference Map

Legend

- Air Force
- Army
- Marine Corps
- Navy
- Washington Headquarters Services
- Air Force
- Army
- Marine Corps
- Navy
- Washington Headquarters Services
- FUDS Property
- Air Force
- Army
- Marine Corps
- Navy
- Washington Headquarters Services
- Range Complex Boundaries
- Instrument Route
- Slow Route

Lat: 34.71 Lon: -120.84 Scale 1: 3,923,814 Go

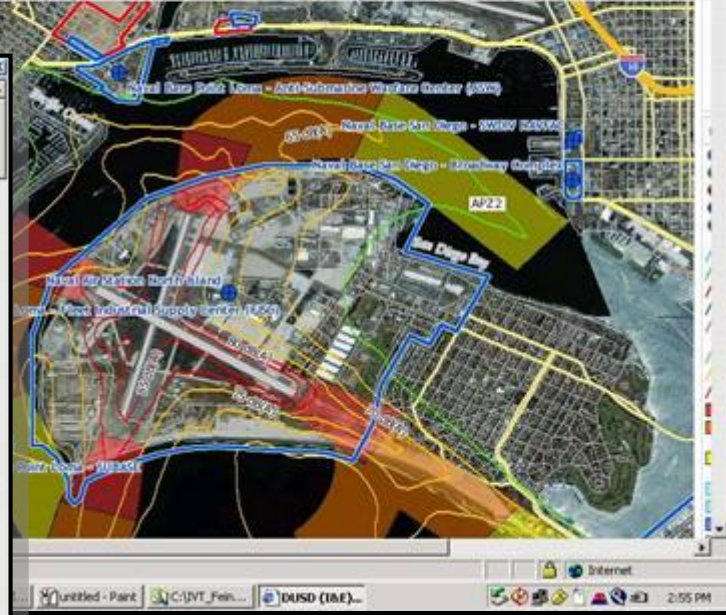
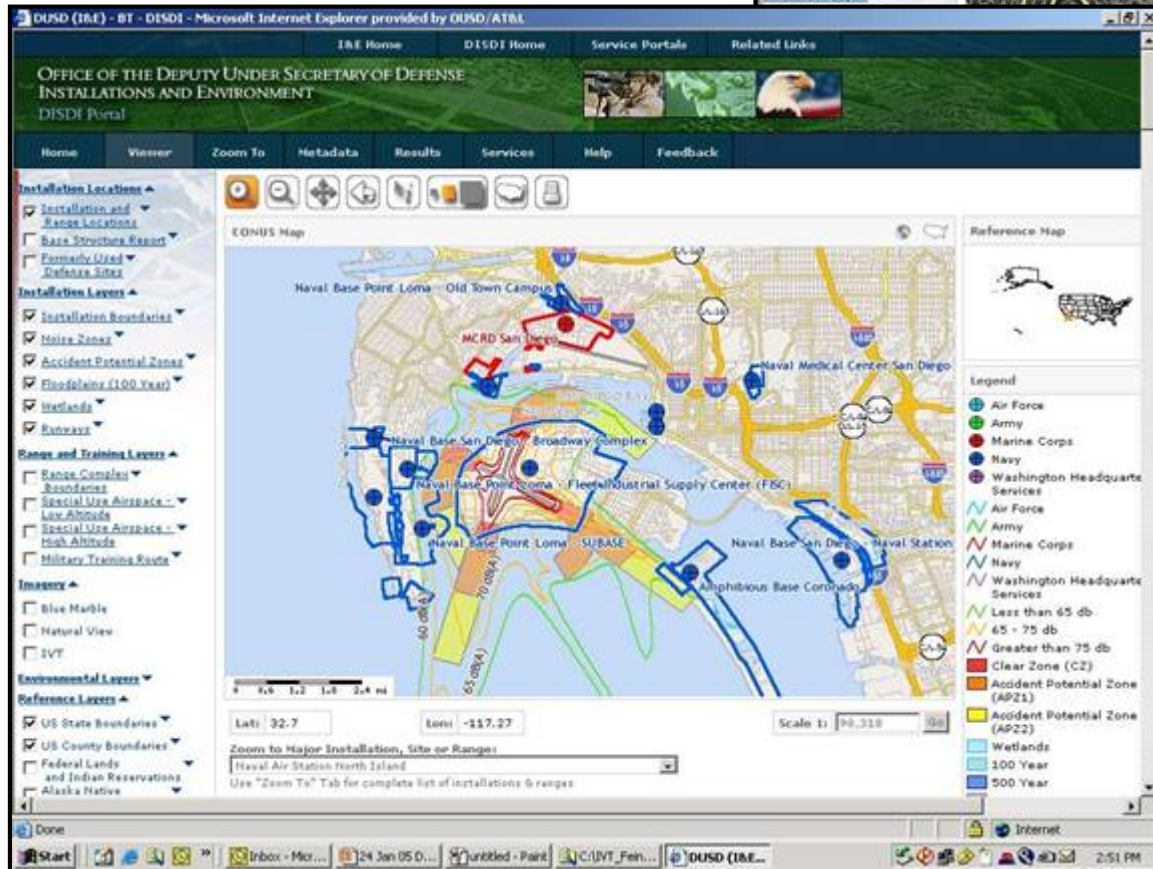
Zoom to Major Installation, Site or Range:
- Choose Installation -

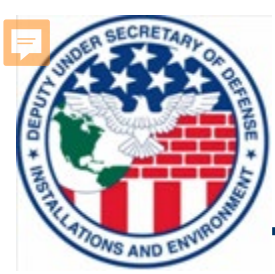
Use "Zoom To" Tab for complete list of installations & ranges



DISDI Portal

Acquisition, Technology and Logistics





Military Service-Specific Applications: MCRAD

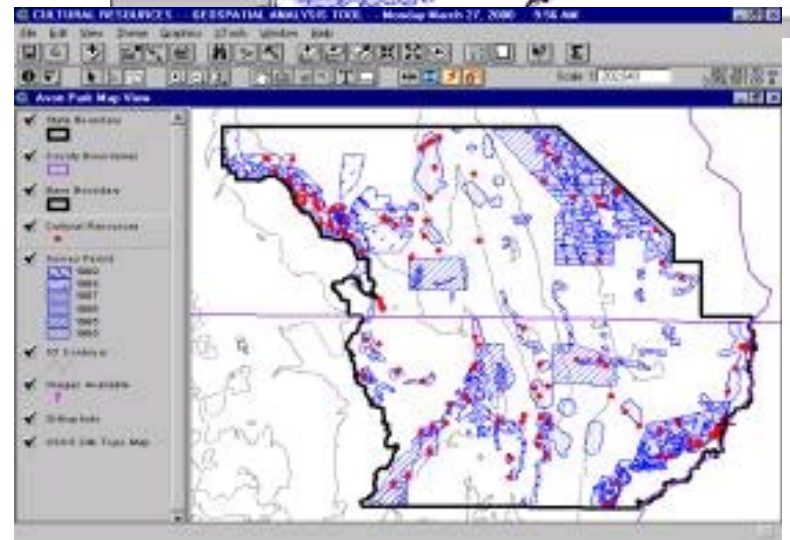
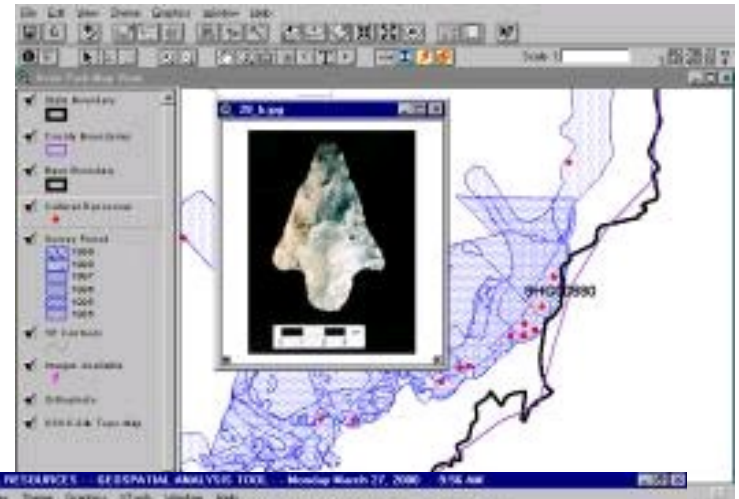
Acquisition, Technology and Logistics

Non-Spatial Themes

Documents
Compliance Consultations
Building Elements
NRHP Eligibility Status
Points of Contact
Artifact Collections
Artifacts
Artifact Tribal Affiliations
ARPA Violations

Spatial Themes

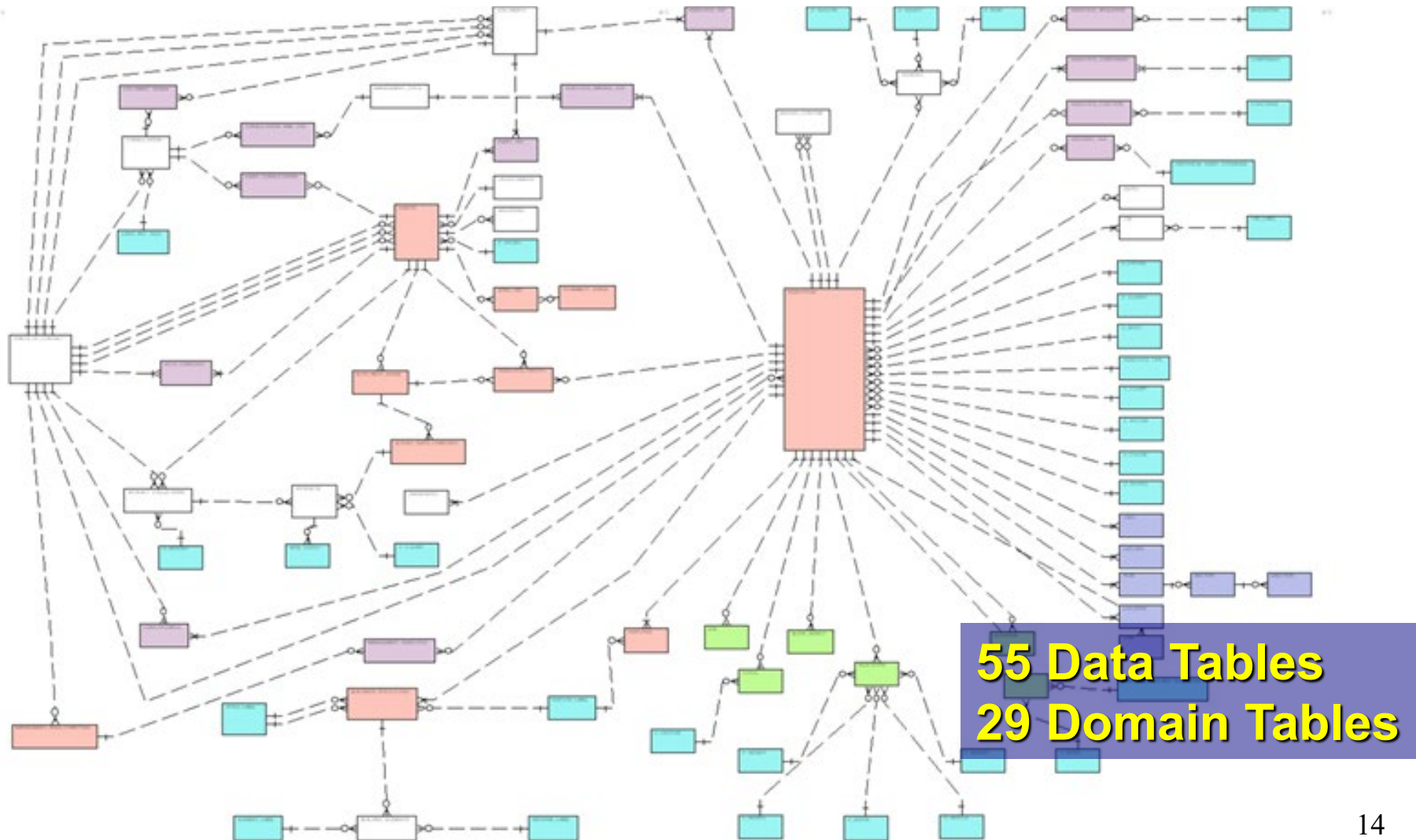
Resources
Resource History
Buildings
Features
Events
Survey Method Areas
Test Locations
Probability Zones
Management Areas
Undertakings





Military Cultural Resources Analysis Database (MCRAD)

Acquisition, Technology and Logistics

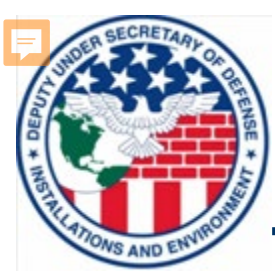




Next Steps for MCRAD

Acquisition, Technology and Logistics

- Integrate into existing DoD (SDSFIE) Cultural Resources Standards
- Integrate in USAF Enterprise Environment, Safety and Occupational Health Management Information System
- Fill gaps in data model
- Continue data population
- Develop work process diagrams
- Develop report generation and analysis capability
- Address web deployment, security



The Future of DoD CR Data Management

Acquisition, Technology and Logistics

- Incorporation of Cultural Resources Data Sets into the larger DoD-wide business enterprise architecture
- Consistency of data collection to support internal and external reporting requirements
- Deployment of MCRAD across more installations
- Adoption of a data model (MCRAD or similar) to define the minimum data collection standard across DoD
- Incorporate data collection and data collection standards into all aspects of DoD cultural resources management programs



Questions?

Acquisition, Technology and Logistics

For more information:

www.acq.osd.mil/ie/bei/disdi.htm

Defense Installations Spatial Data Infrastructure

<http://www.versar.com/mcrad-com/secure/mcrad-com-files/main.htm>

Military Cultural Resources Analysis Database

<https://www.denix.osd.mil/denix/Public/Library/NCR/toc.html>

DoD Conservation Program (includes Cultural Resources)

The Department of Defense: Transforming the Business of Military Cultural Resource Data

Brian Michael Lione

Deputy Federal Preservation Officer, Department of Defense

DataPalooza: State And Federal Applied Technology

In Support Of Cultural Resource Management

Society for American Archaeology

April 29, 2006

