

# **DERP Forum**

**Strengthening Relationships with our Regulatory Partners**

---

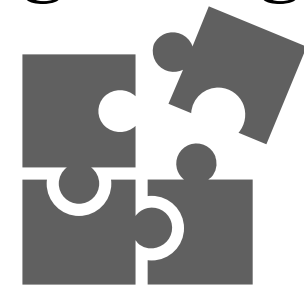
**St. Louis, Missouri**

**May 8-9, 2019**



# **The PFAS PUZZLE**

**One State's Approach to  
Piecing it Together**



**May 2019**

# Why is PFAS an Issue in New York?

---

- **No known manufacturers of PFAS**
- **Many users of PFAS in product manufacturing**
- **AFFF use at military installations**
- **AFFF use at Airports**
- **AFFF at Fire Training Centers**
- **AFFF use by Fire Departments**
- **Disposal of PFAS containing material at Landfills**
- **Composting Facilities**

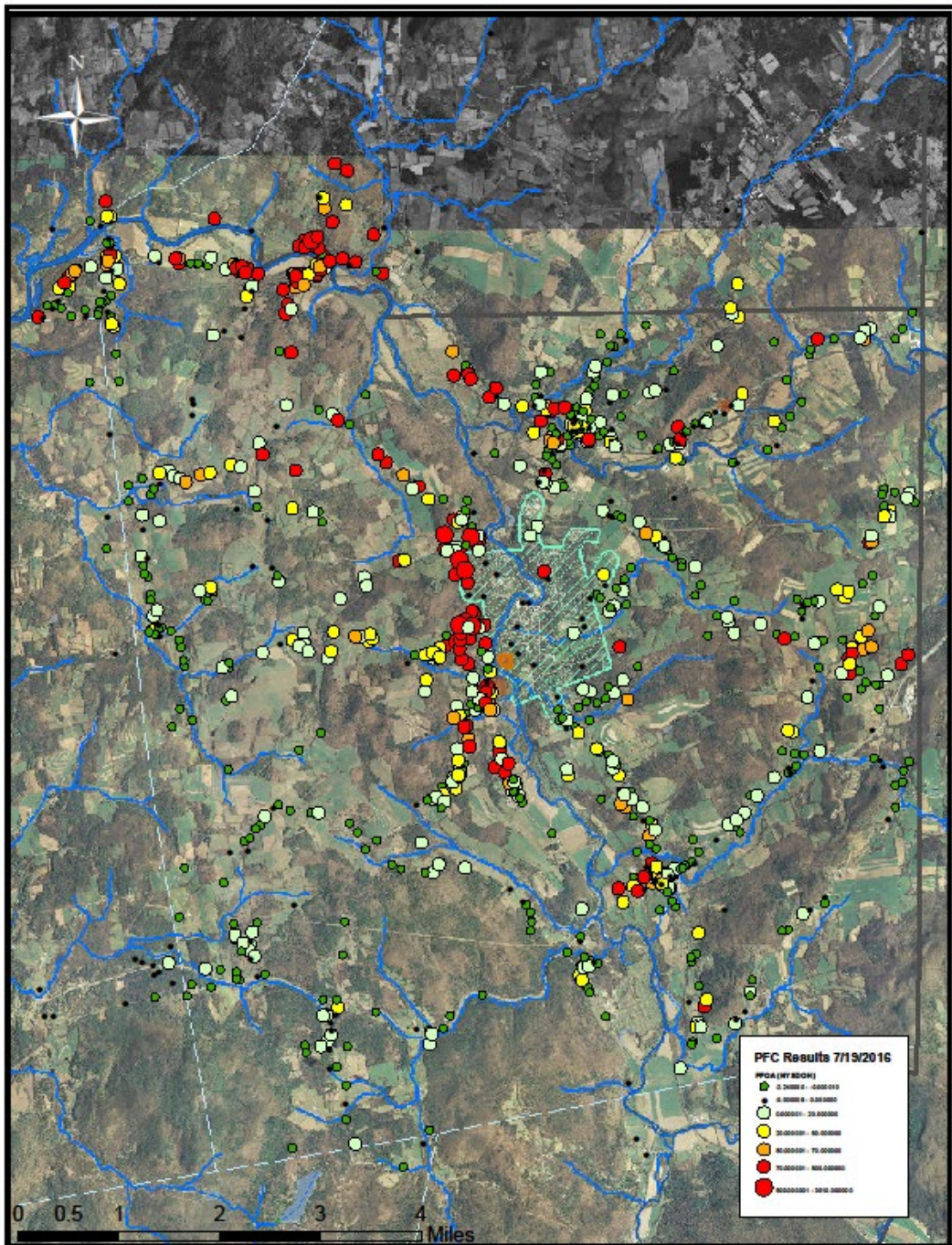


# Hoosick Falls: A Community Shaken

---

- **Multiple businesses in the area built upon the fabric coating industry and use of PFAS liquid dispersions or fine powders**
- **2015 -Village water supply serving ~3000 people contaminated with PFOA**
- **Water Supply wells located 1200' from one mfg facility**
- **Private wells in Town also contaminated with PFOA**





# Town of Hoosick Affected Private Wells

# Response Action taken by New York

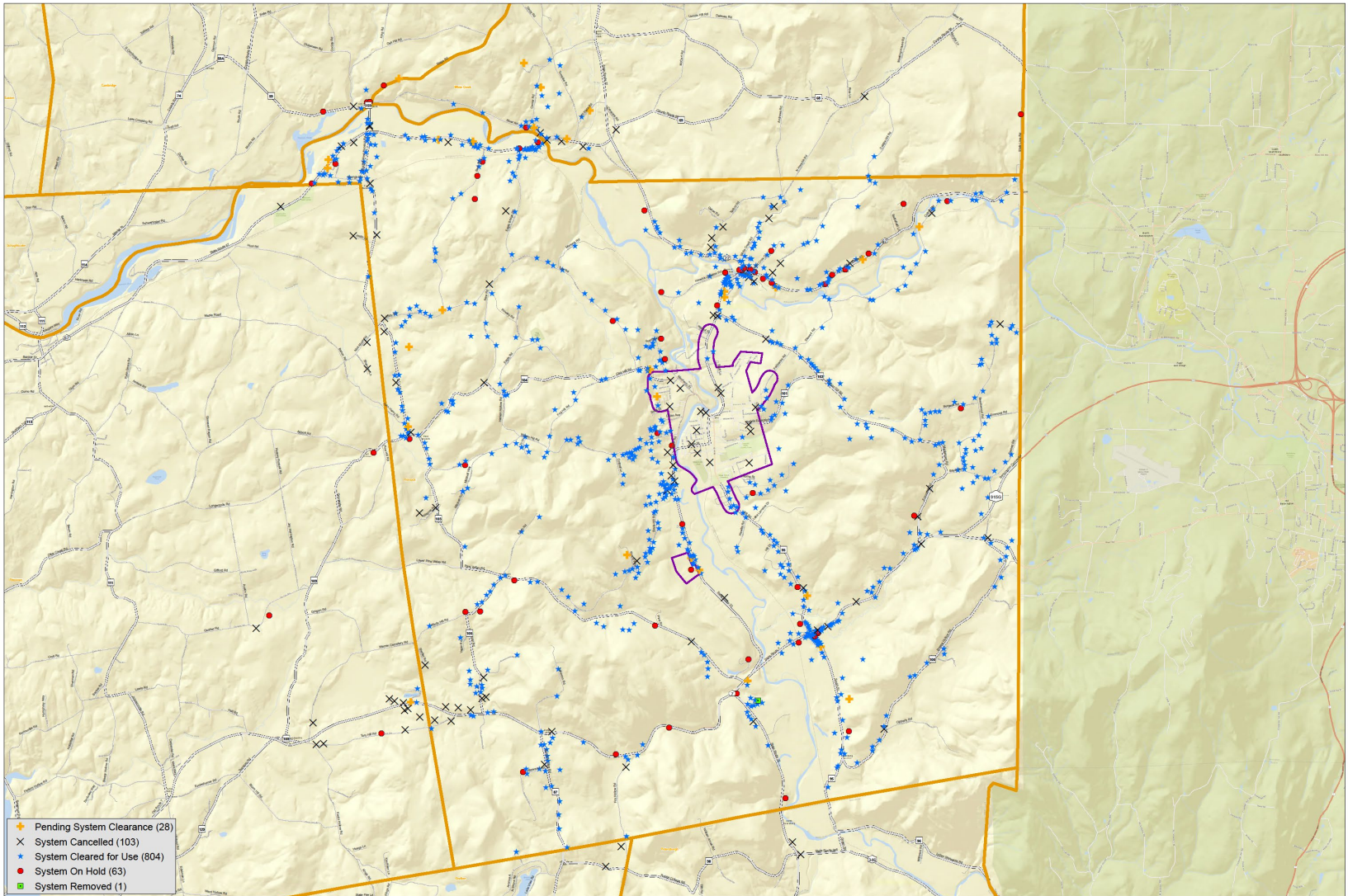
- **Emergency response initiated in Hoosick- Installed almost 1000 POETS in 3 months**
- **GAC on MWS**



# Town of Hoosick

## Installation Status of POET Systems

Status in the database as of 18:00 Hrs on 8/9/2016



0 0.5 1 2 3 4 Miles

# Legislative/Rulemaking Actions

---

- **Formation of a Water Quality Rapid Response Team**
- **Emergency Rulemaking listing PFOA and PFOS as Hazardous Substances**
- **Clean Water Infrastructure Act – provided funding for response**
- **Formation of a Drinking Water Quality Council**
- **Promulgation of MCLs- not yet- soon**





# Other Response Actions

---



# PFAS SURVEY

---

- **Surveyed 2500**

- Manufacturing Facilities
- Fire Training Centers
- Fire Departments
- Airports
- Bulk Storage Facilities

- **Results**

- 250 Facilities within ½ mile of a drinking water supply
- Testing on or near the Facility
- Impacted Water Supplies Mitigated

# PFAS Initial Sampling Initiative

---

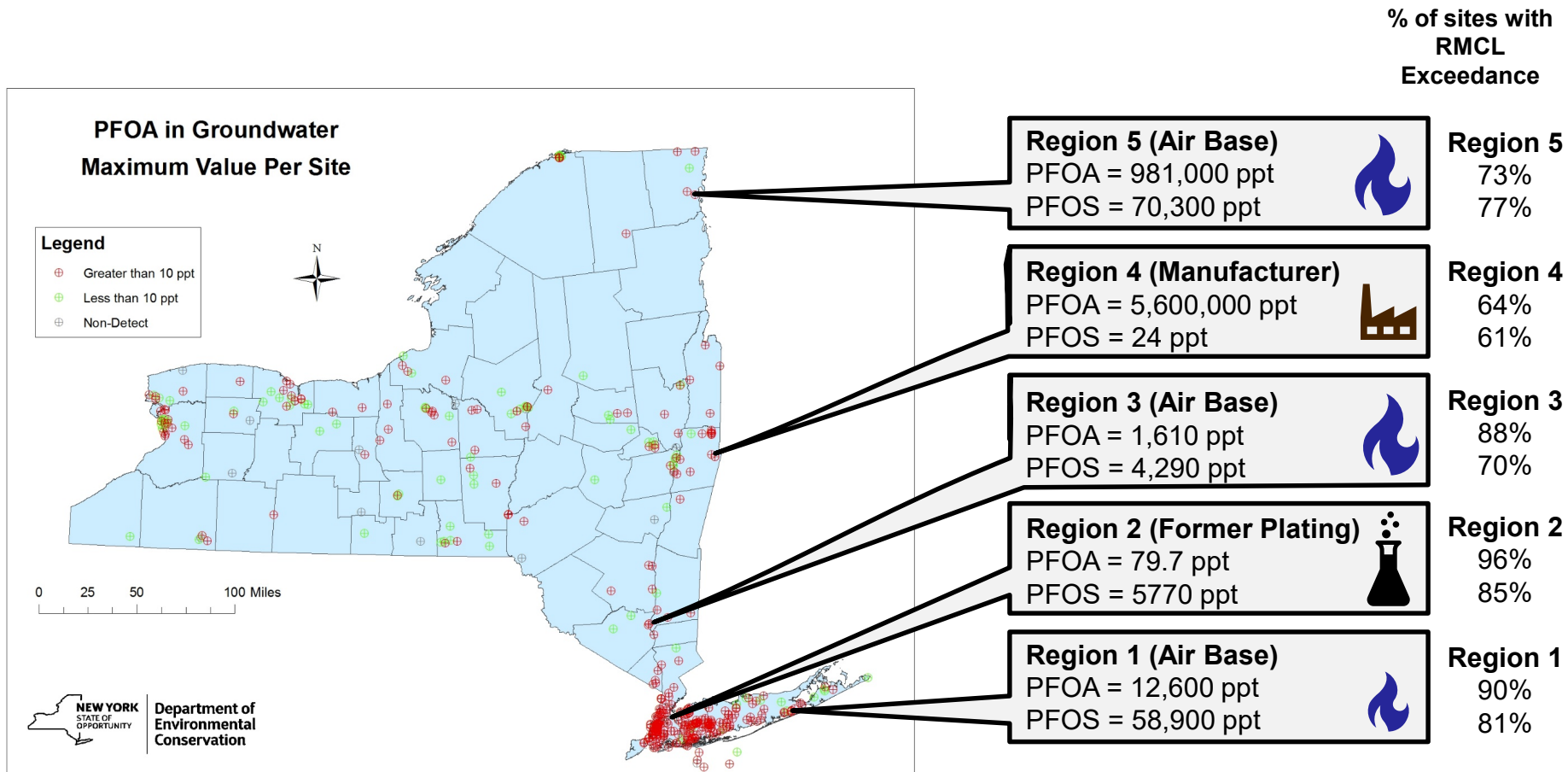
- **Assess presence of PFAS and 1,4-Dioxane in groundwater at each active remedial site by 2020**
  - 1475 Sites
  - ~55% have been sampled

# Purpose

---

- **Evaluate types, amounts, and likely areas of concern of PFAS and 1,4DX in groundwater across the state**
- **Data to be utilized to:**
  - Identify potential receptors (especially drinking water)
  - Mitigate potential public health and environmental impacts
  - Formulate priorities, policies and procedures for addressing emerging contaminants

# PFOA/PFOS Groundwater Max Values Per Region



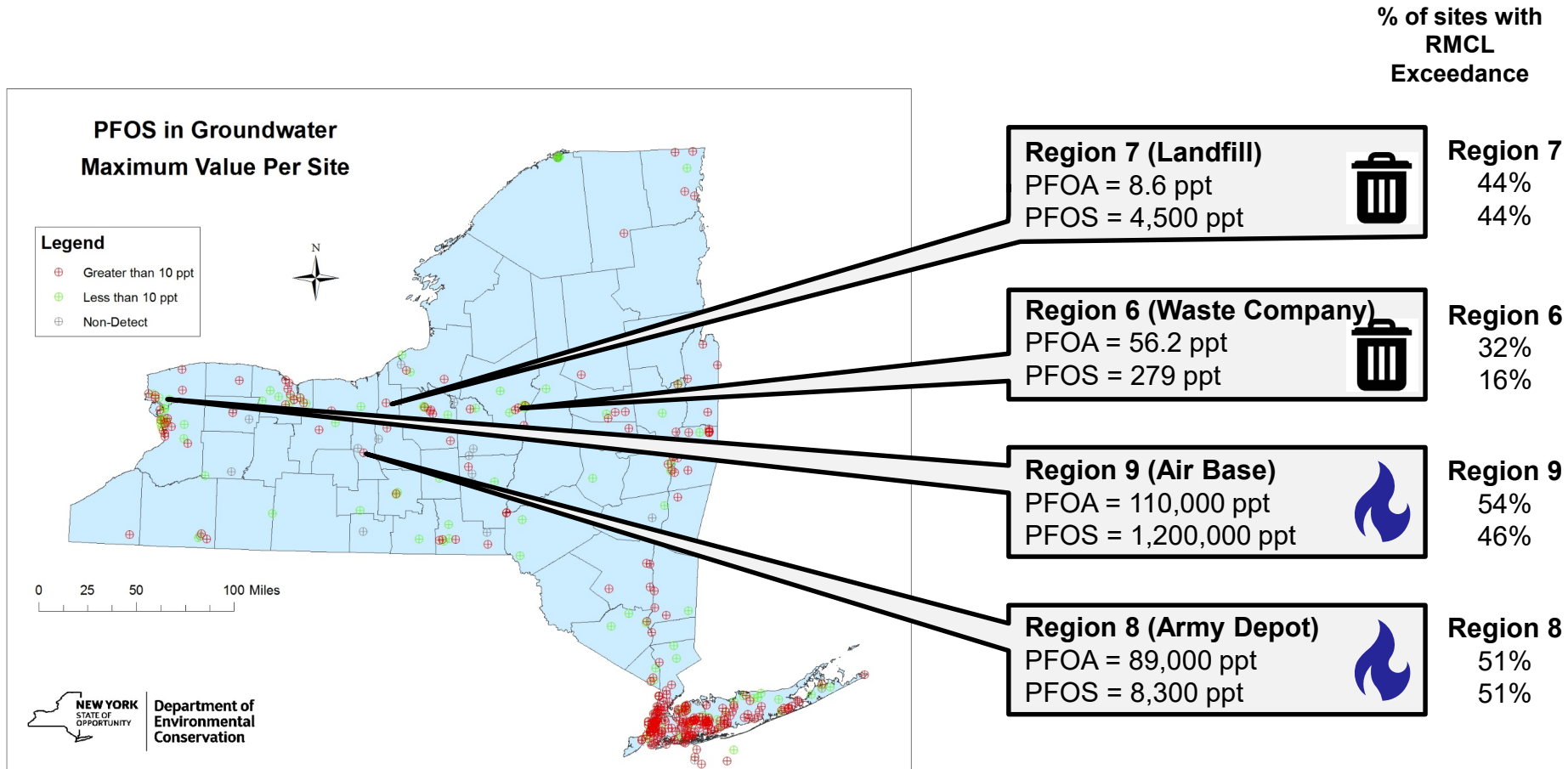
## DERP FORUM

STRENGTHENING RELATIONSHIPS WITH OUR REGULATORY PARTNERS

May 7-9, 2019 St. Louis, MO

#DERPForum

# PFOA/PFOS Groundwater Max Values Per Region



## DERP FORUM

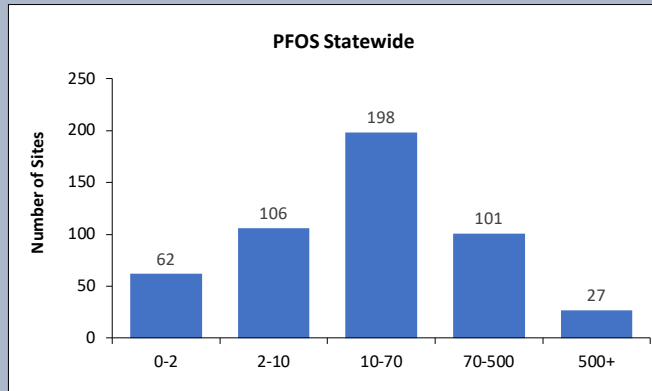
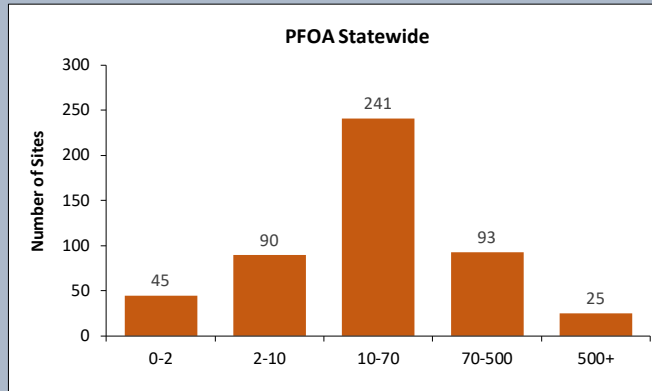
STRENGTHENING RELATIONSHIPS WITH OUR REGULATORY PARTNERS

May 7-9, 2019 St. Louis, MO

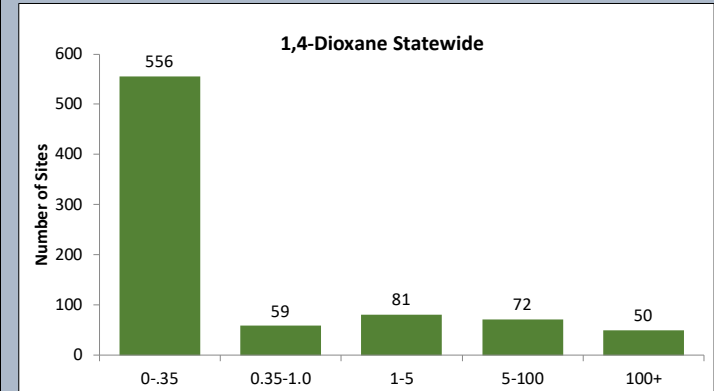
#DERPForum

# Statewide Data as of 4/16/2019

Possible MCL (input values)	PFOA		PFOS	
	Number of Sites Above MCL	% Above	Number of Sites Above MCL	% Above
70	118	24	128	26
10	359	73	326	66
<b>Total Number of Sites</b>	494			



Possible MCL (input values)	1,4 - Dioxane	
	Number of Sites Above MCL	% Above
1	203	25
0.35	262	32
<b>Total Number of Sites</b>	818	



## Statewide Progress

- 1,475 Sites With EC projects
- 54% Sampling Has Started
- 39% EC Project Complete
  - 10% No Further Action (56 sites)
  - 28% Terminated (160 sites)
  - 62% Further Action (352 sites)

# Further Actions: Prior to Remedy Selection

---

- **Investigation phase (prior to remedy selection)**
  - Monitor EC levels in groundwater and sample other media as part of investigation
  - Initiate water supply sampling/mitigate as directed by DOH
- **If the Site is the apparent source:**
  - Determine nature and extent
  - Identify source(s)
  - Incorporate ECs into remedy selection



# Further Actions:

## Site Management Phase

---

- **Post RA/site management phase sites**
  - Add ECs to groundwater monitoring program
  - Initiate water supply sampling/mitigate as directed by DOH
  - Assess need for remedial options for ECs during periodic review
    - Assess applicability of new technologies
    - Assess applicability of environmental or health-based standards/guidance available or in place at time of review

# Other Response Actions

---

- **AFFF Collection**
- **Water Supply Source Assessments**
- **Inactive Landfill Initiative (>2000 Landfills)**
- **Identified 30 potential SSF sites**
- **Bio Monitoring and assessment of affected populations**
- **Incorporation of PFAS into the Remedial Program**



# Next Steps

---

- **Establish MCLs**
- **Continue Assessment of Incoming Data**
- **Take Appropriate Follow up Action (water supply mitigation, monitoring, etc)**
- **Preliminary Environmental Assessments at:**
  - Fire Training Centers
  - Airports and Fire Stations
- **Establish surface water and groundwater guidance/standards**



---

**Thank You**

**Susan Edwards, P.E.**  
**Director**  
**NYSDEC, DER, Bureau D**  
**May 2019**