

IH Metrics in draft DoDI 6055.5

Occupational & Environmental Health Surveillance

John Seibert, CIH, CSP

with Air Force data provided by

LtCol Alan Dooley, CIH

HQ USAF/SGP

Purpose of DoDI 6055.5

- Implement Operational Risk Management (ORM) for health hazards
- **Evaluate** and **control** health hazards
- **Occupational & environmental** exposures
- Include **military operations**

ORM Steps ---- IH Steps

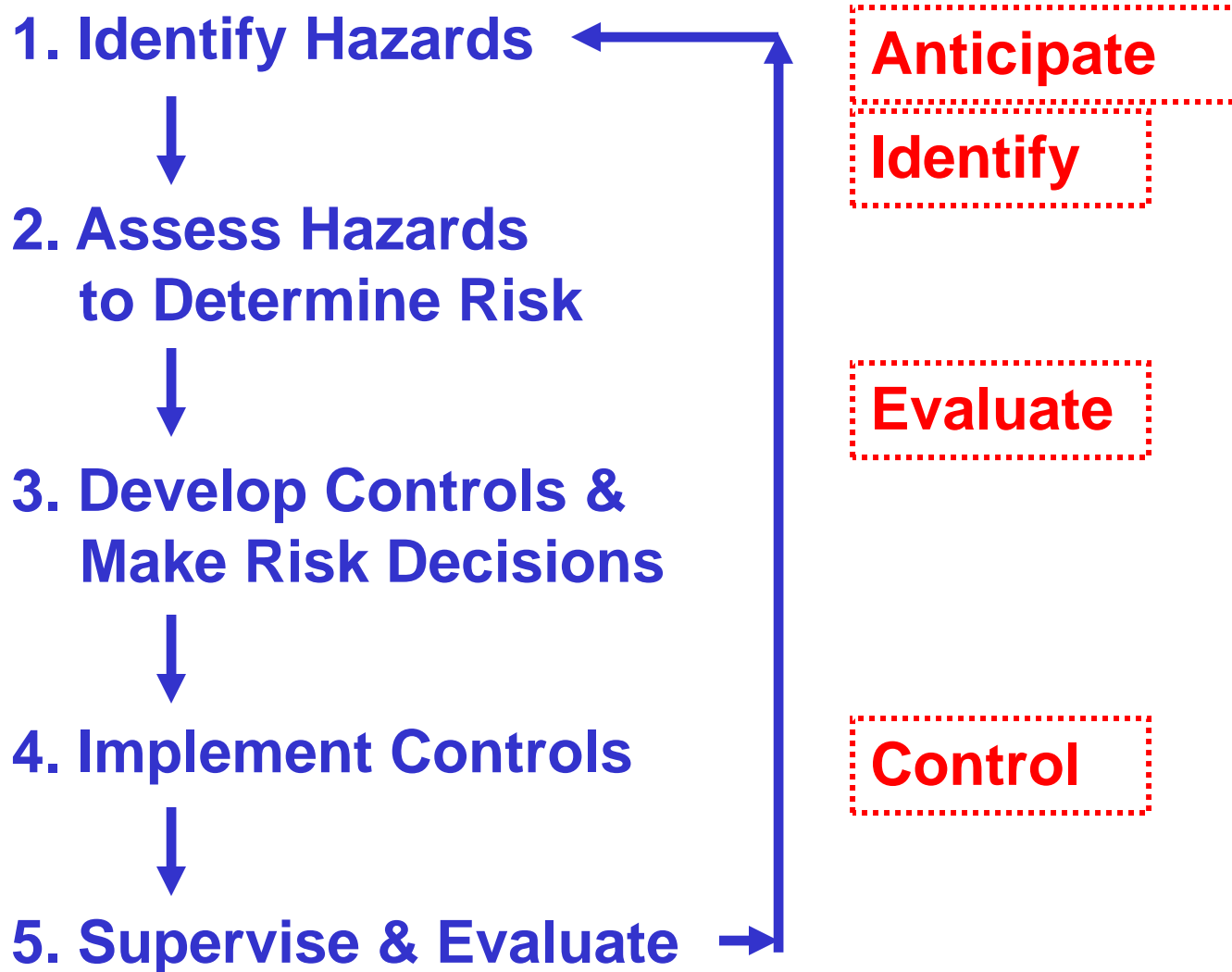
1. Identify Hazards
2. Assess Hazards to Determine Risk
3. Develop Controls & Make Risk Decisions
4. Implement Controls
5. Supervise & Evaluate

Anticipate

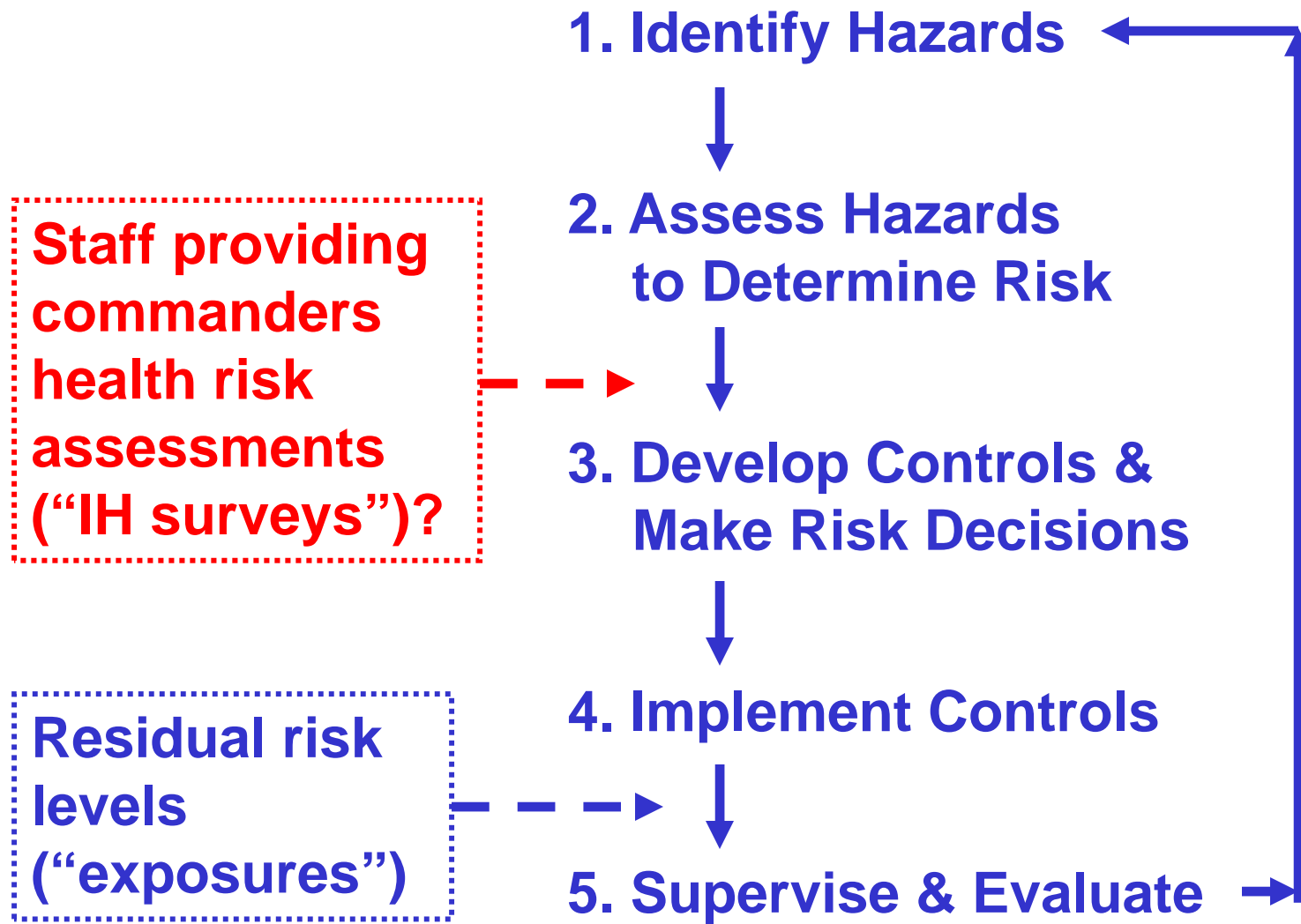
Identify

Evaluate

Control



2 Types of Metrics for ORM



IH Survey Completion

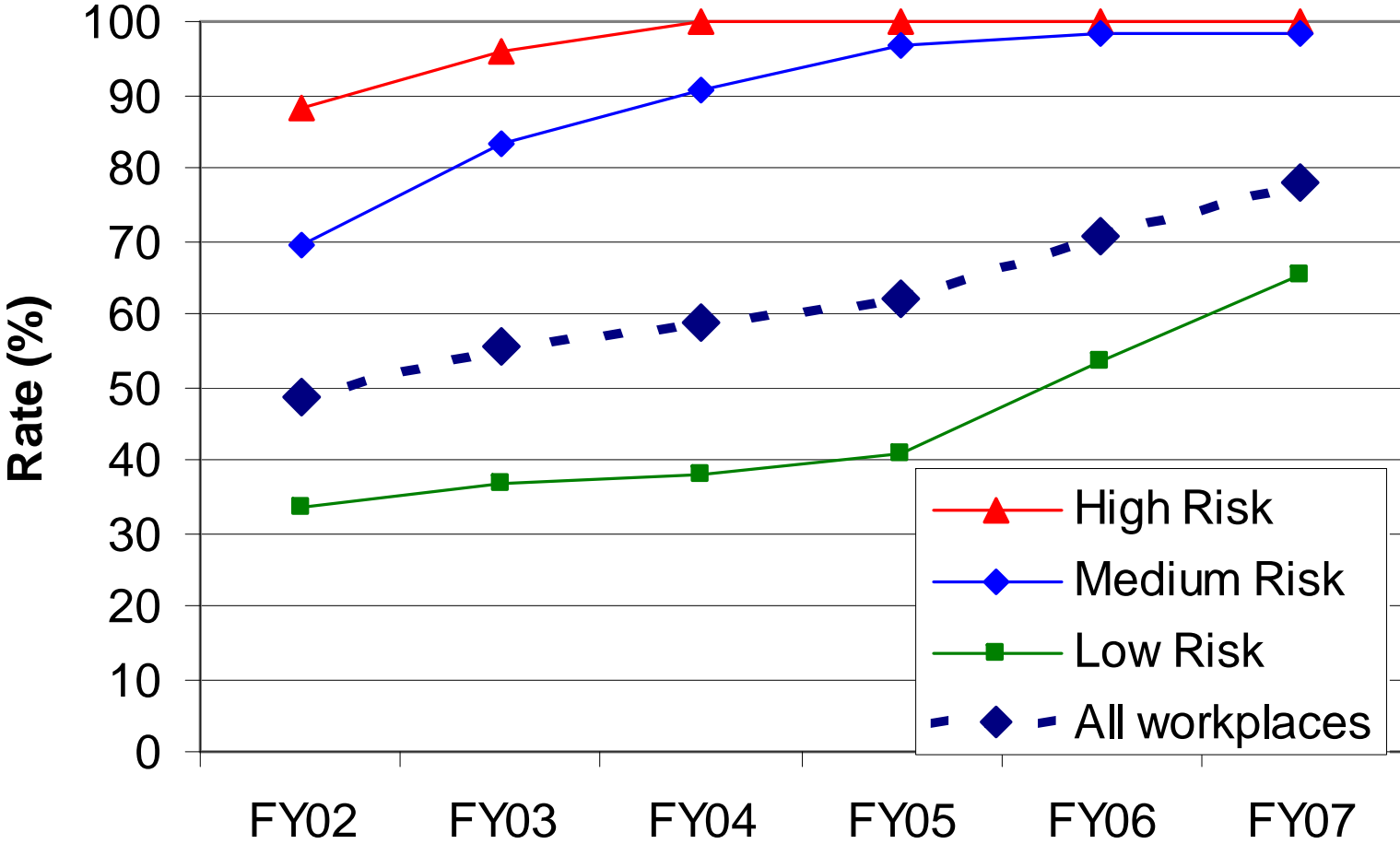
“Percent of Shop Hazard Characterizations Completed”

$$\frac{\text{\# shops assessed} \times 100\%}{\text{\# shops requiring assessment}}$$

- Requiring assessment
 - frequency from DoD Component policy
- Assessed
 - basic characterization of health hazards in a shop
 - report sent to commander or shop supervisor

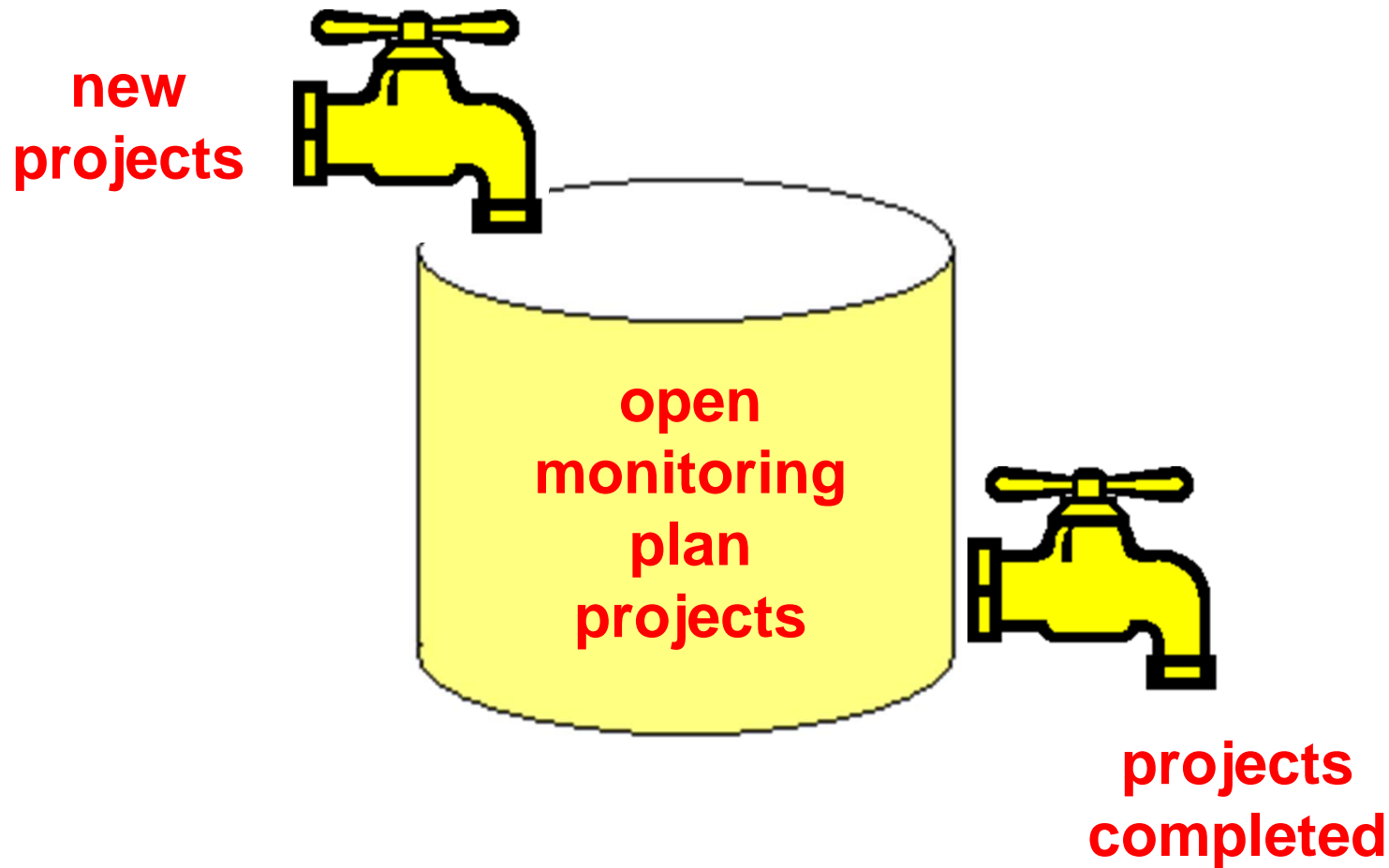
Notional Example

**Rate of Completing Shop Hazard Characterizations
(notional data)**



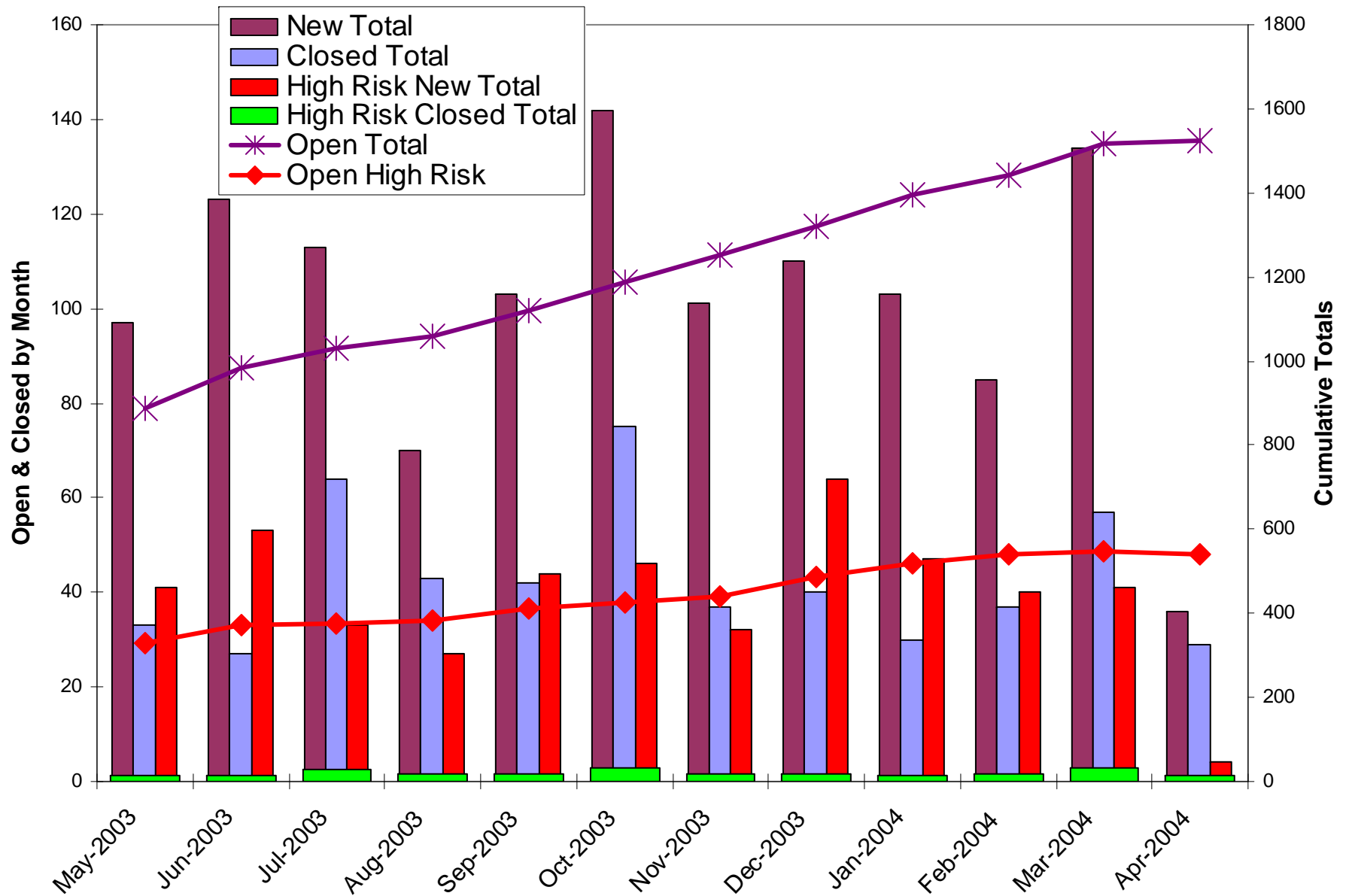
IH Survey Completion

“Monitoring Plan Completed”



Example: Monitoring Plan Completed

Air Force-wide Data



2 Types of Metrics for ORM



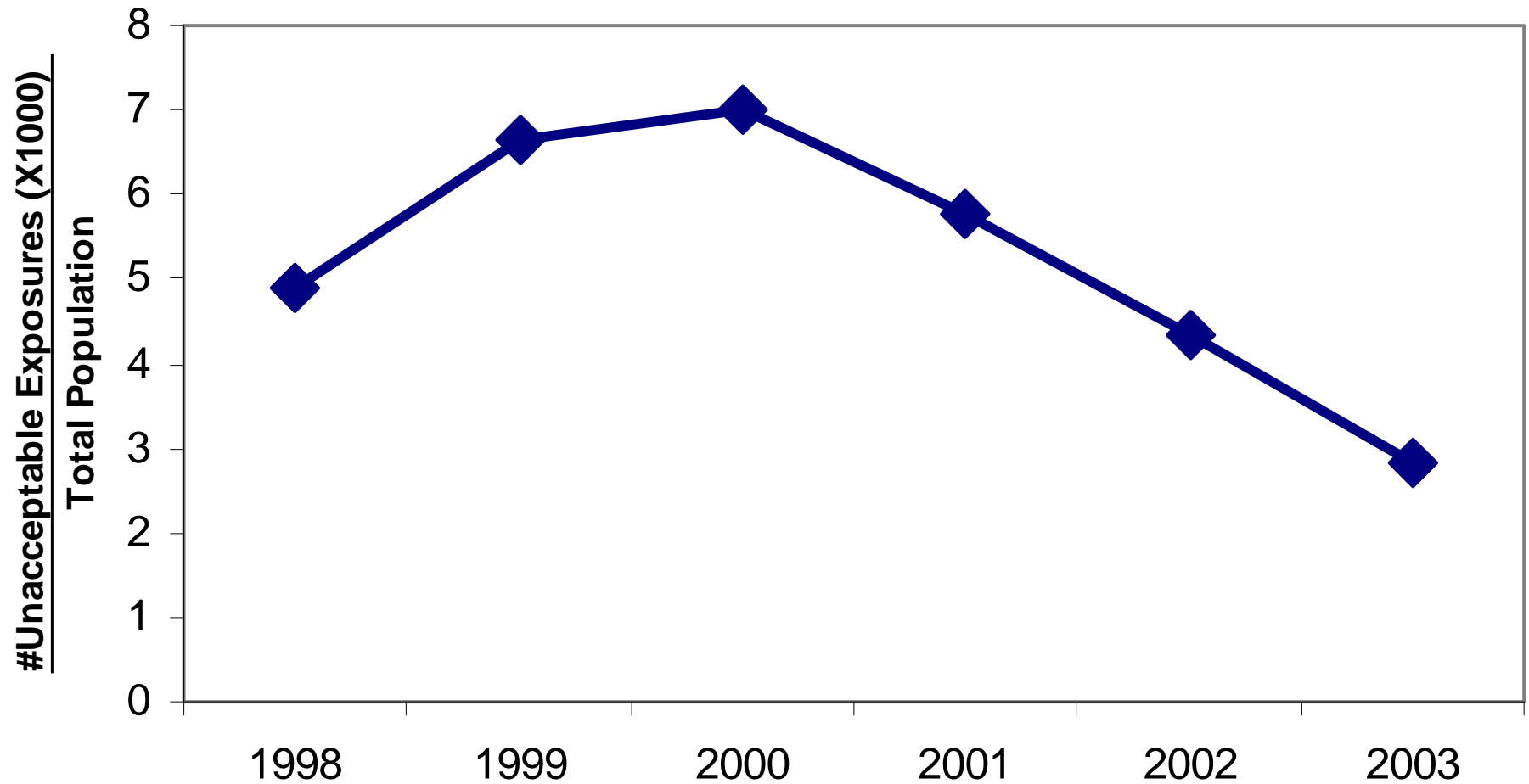
Exposures

“Index of Unacceptable Exposures”

$$\frac{\text{\# unacceptable exposures}}{\text{\# of total population}}$$

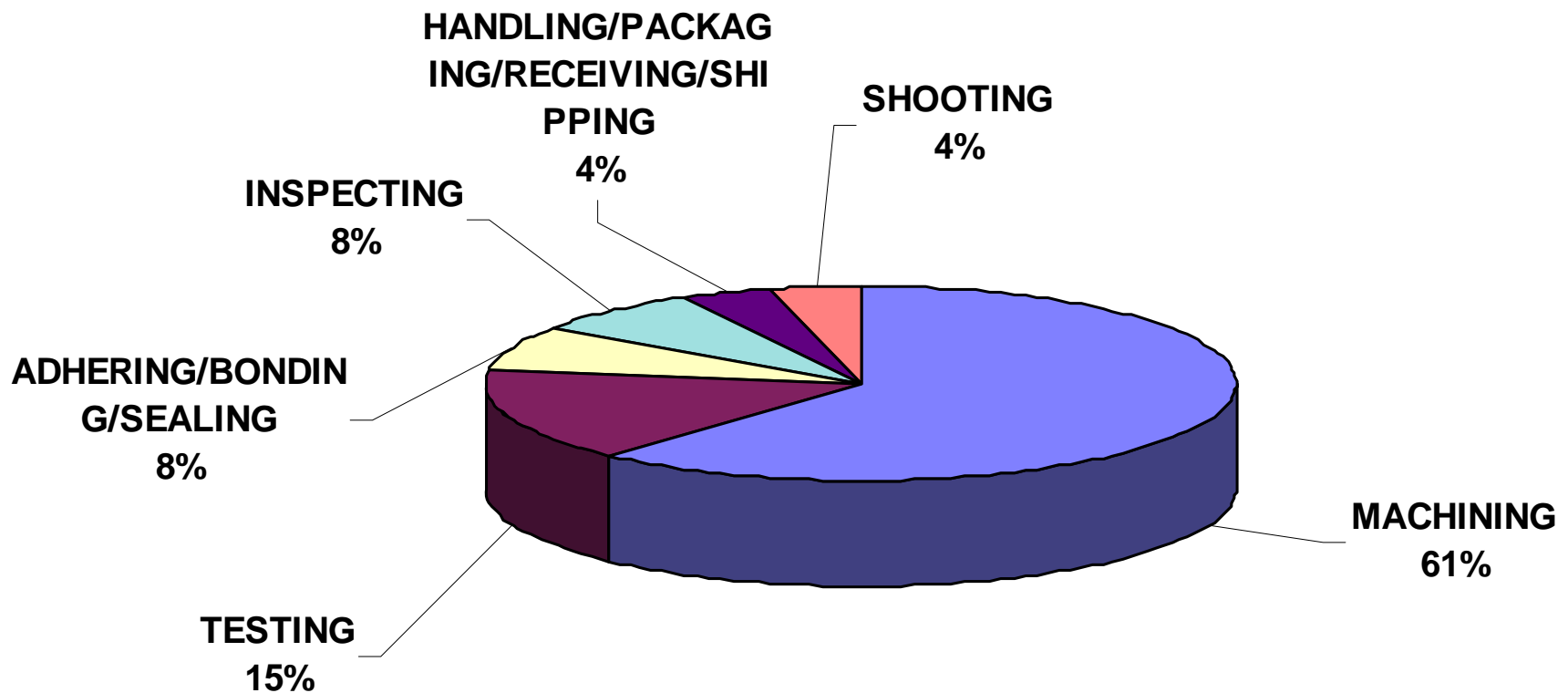
- # of total population
 - number of people in an organization
- # of unacceptable exposures
 - exposures > OEL
 - evidence of adverse health effects
 - e.g., musculoskeletal disorder
 - count each unacceptable hazard

Index of Unacceptable Exposures Noise in AFMC



Overexposures by Process

Noise in AFMC



Exposures

“Percent of Hazards by Risk Level”

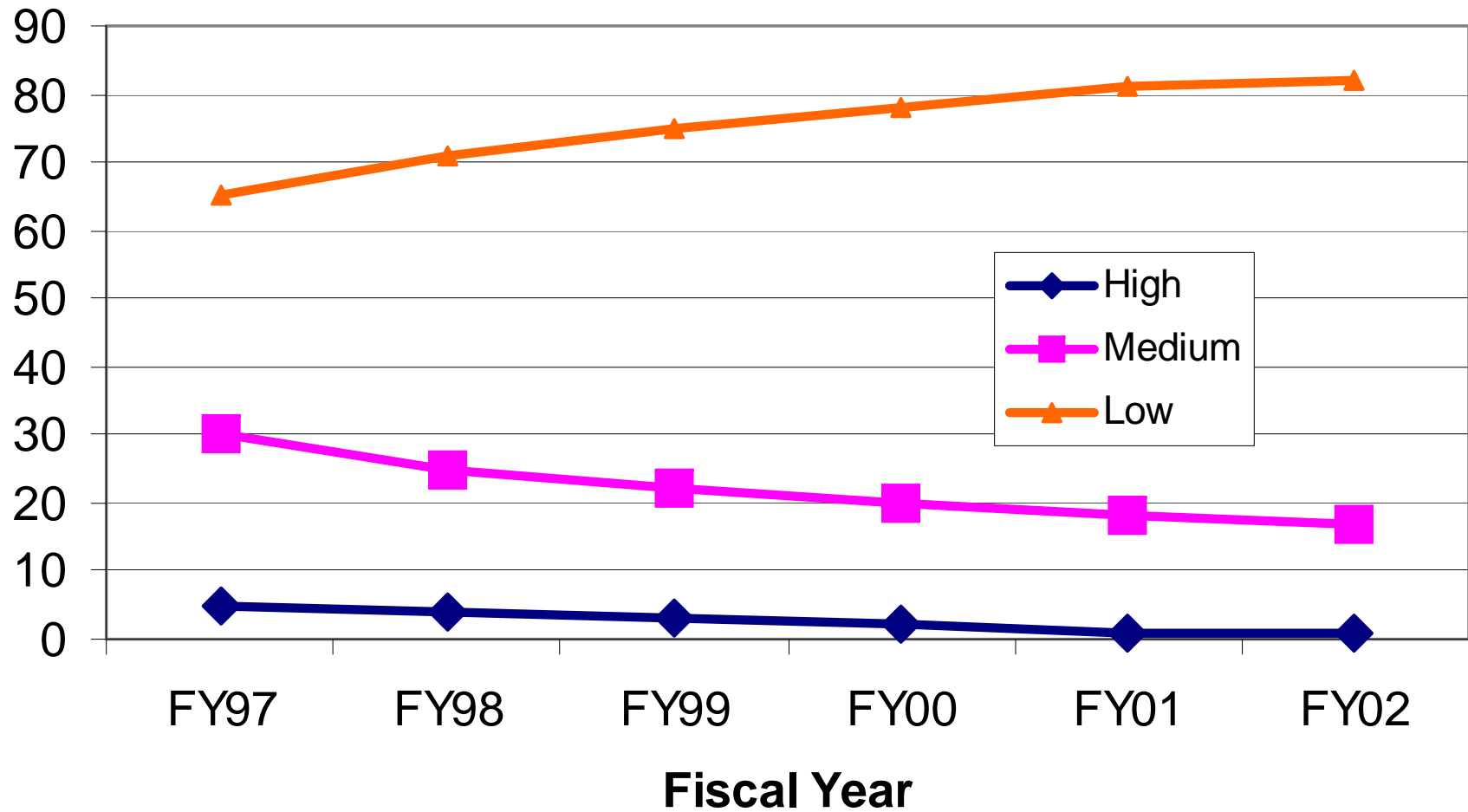
$$\frac{\text{\# high/medium/low risk hazards}}{\text{\# of total hazards (unacceptable exposures)}} \times 100\%$$

- # of total hazards
 - total # of hazard exposures identified during basic characterization and assigned a risk level
- # of high/medium/low risk hazards
 - # of hazards within each of the 3 risk levels
 - risk levels updated with new evidence

Notional Example

Percent of
Total

Hazards By Risk Level (Notional Data)



Conclusion:

Measuring Implementation of ORM

