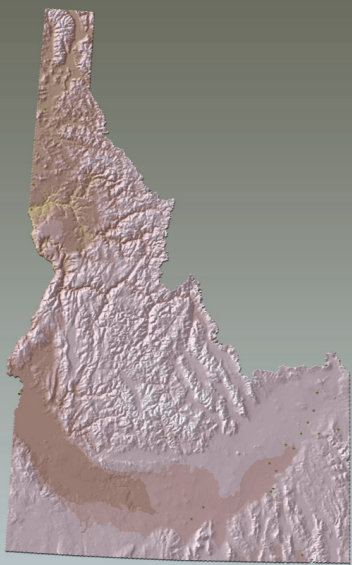
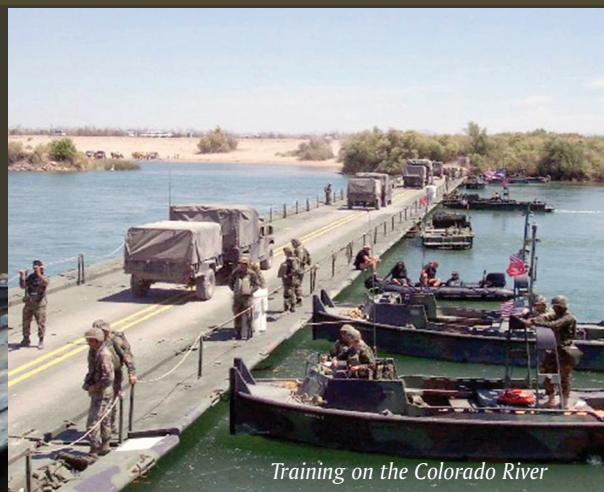


# DoD IN IDAHO



## We Must Train As We Fight

Our troops deserve unfettered space and natural conditions to properly train and prepare for potential real world combat environments. This enhances their success and survivability by insuring doctrinally rehearsed, responsive and appropriate fighting skills.



Training on the Colorado River



Crossing the Saddam Canal, Iraq



## DoD Dollars in IDAHO (in millions)

State Total .....	\$935
Mountain home AFB .....	\$276
Boise .....	\$167
Mountain Home .....	\$42
Other .....	\$450

Source: [http://siadapp.dmdc.osd.mil/personnel/L03/fy09/atlas\\_2009.pdf](http://siadapp.dmdc.osd.mil/personnel/L03/fy09/atlas_2009.pdf)

## Sustaining Our Environment Is Critical

We must manage and use our military training and testing ranges so they are always available to meet mission requirements. Sustaining our diverse physical and environmental resources is critical to maintaining Soldier readiness.



## DoD Personnel in IDAHO

■ State Total .....	12,575
■ Mountain Home AFB .....	4,891
■ Boise.....	1,042
■ Other .....	6,642

Source: [http://siadapp.dmdc.osd.mil/personnel/L03/fy09/atlas\\_2009.pdf](http://siadapp.dmdc.osd.mil/personnel/L03/fy09/atlas_2009.pdf)

## Linking DoD With State and Local Communities



The sustainable futures of our installations and our communities are inextricably connected. We are committed to working with state legislatures; regional, state, and local agencies; communities; and NGOs to insure compatibility between communities near our bases and the military mission.



*Sustaining Readiness In Partnership With States*

# DoD IN IDAHO

## Legend

-  U.S. Army
-  U.S. Air Force
-  National Guard Sites
-  Metro Areas



## Orchard Training Area (OTA)

The OTA comprises 138,051 acres and is a major training site with a wide range of training resources. The OTA has been used by the Idaho Army National Guard; four adjacent states' National Guard units; and Reserve and Active Component units since 1953. It is located 14 miles south of Boise and is within the Snake River Birds of Prey National Conservation Area.



## Gowen Field

Gowen Field is home to the Idaho National Guard, as well as reserve units of the Army, Navy, and Marines. It serves as a premier training center for military personnel from all services, and supports the military's power projection missions. Joint Force Headquarters-Idaho, the 116th Cavalry Brigade Combat Team, and the 1st Battalion-183rd Aviation Battalion are located on Gowen Field. The 124th Fighter Wing, which flies the A-10 aircraft, is the host unit at Gowen Field.



## Idaho National Guard

Within DoD, the Guard is unique, serving both the Governor and the President in time of crisis.



## Mountain Home Air Force Base (MHAFB)

MHAFB is located on approximately 6,851 acres of land 50 miles southeast of the Boise, Idaho in the Snake River Basin between the Owyhee and Danskin mountain ranges. The host unit is the 366 Fighter Wing, home to three F-15 fighter squadrons: the 389th, 391st and the Republic of Singapore 428th Fighter Squadron. The 366th FW develops and deploys combat ready Airmen in support of wartime and peacetime contingencies.



## Mountain Home Range Complex (MHRC)

MHRC is comprised of 9,818 square miles of airspace and 122,000 acres of land used for air-to-ground training. The MHRC provides a realistic training environment supporting Air Force and Department of Defense users across the nation. The MHRC includes the Juniper Butte and Saylor Creek air to ground training ranges. Public access is permitted on approximately 97,000 acres of Air Force-owned land around Saylor Creek Range.