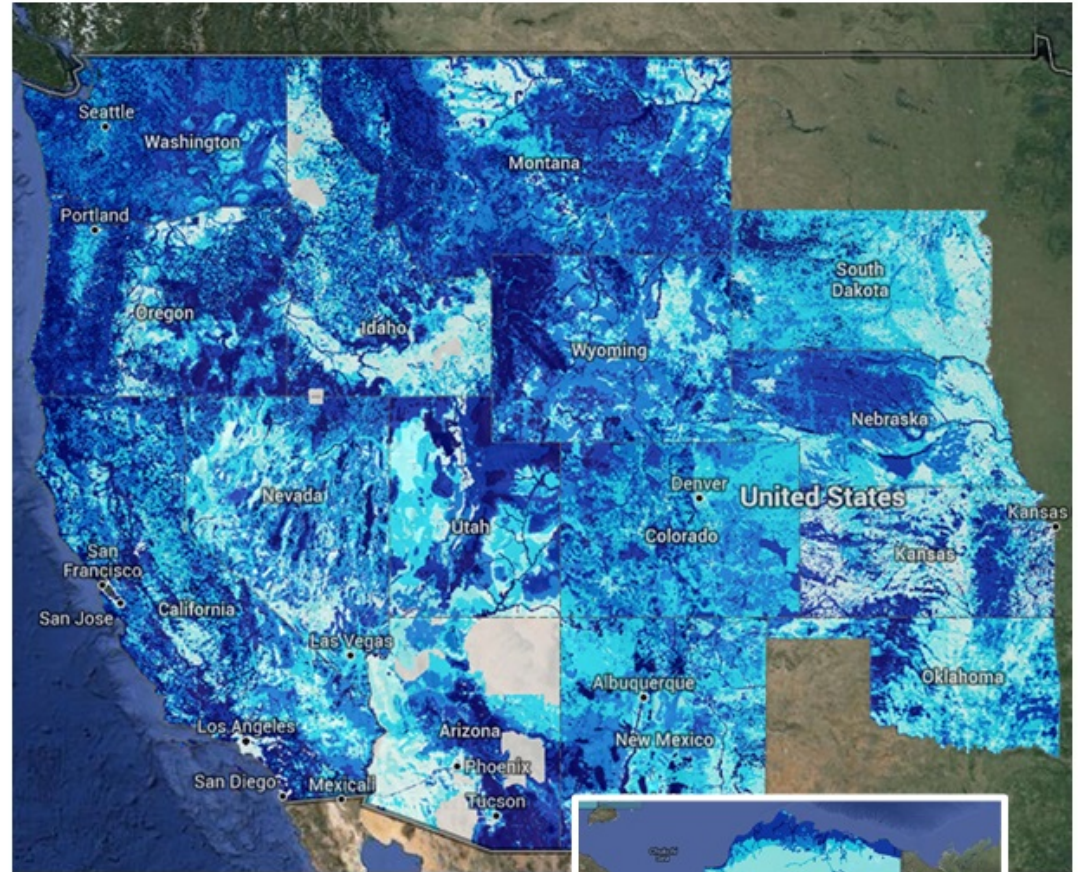


Crucial Habitat Assessment Tool (CHAT)

Rayo McCollough, Data Manager,
Natural Heritage New Mexico
and

Chuck Hayes, Assistant Chief for
Technical Guidance, New Mexico
Department of Game and Fish

Mapping Fish
and Wildlife
Across the
West



Crucial Habitat is ranked on a scale of 1 to 6, with 1 indicating areas most likely to provide crucial habitat and depicted in darker blue colors on the map.



CHAT

Goals and Objectives

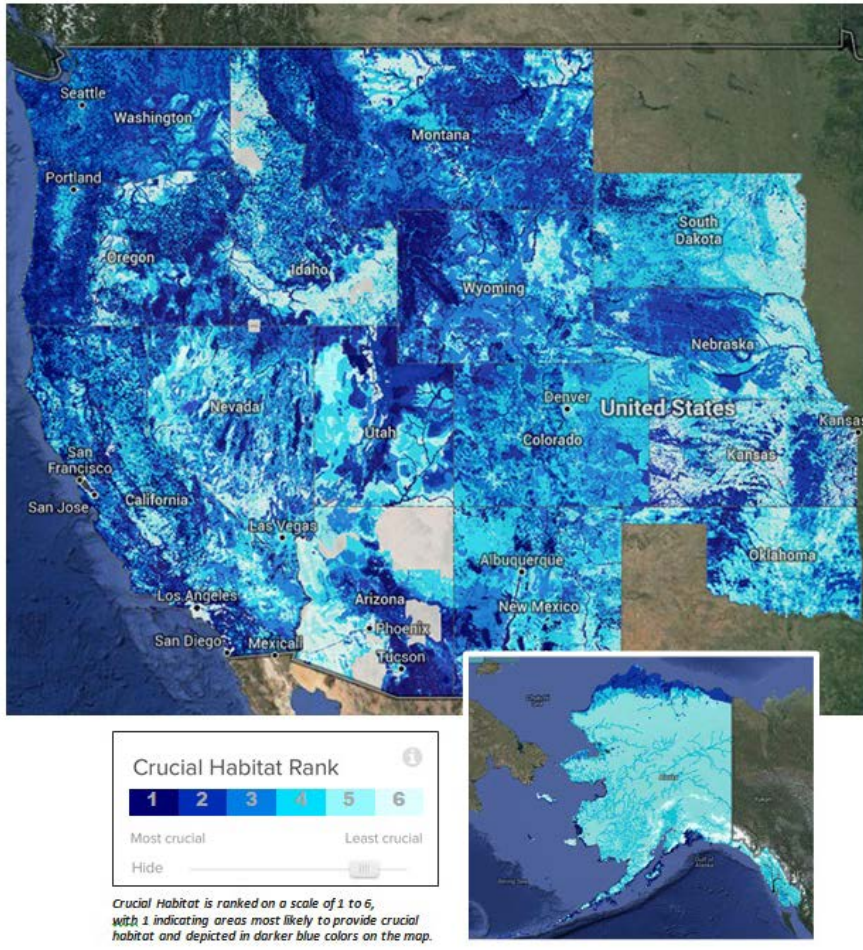


The Crucial Habitat Assessment Tool incorporates wildlife and ecological data into an online map identifying “crucial” wildlife habitat and corridors across 16 western states.

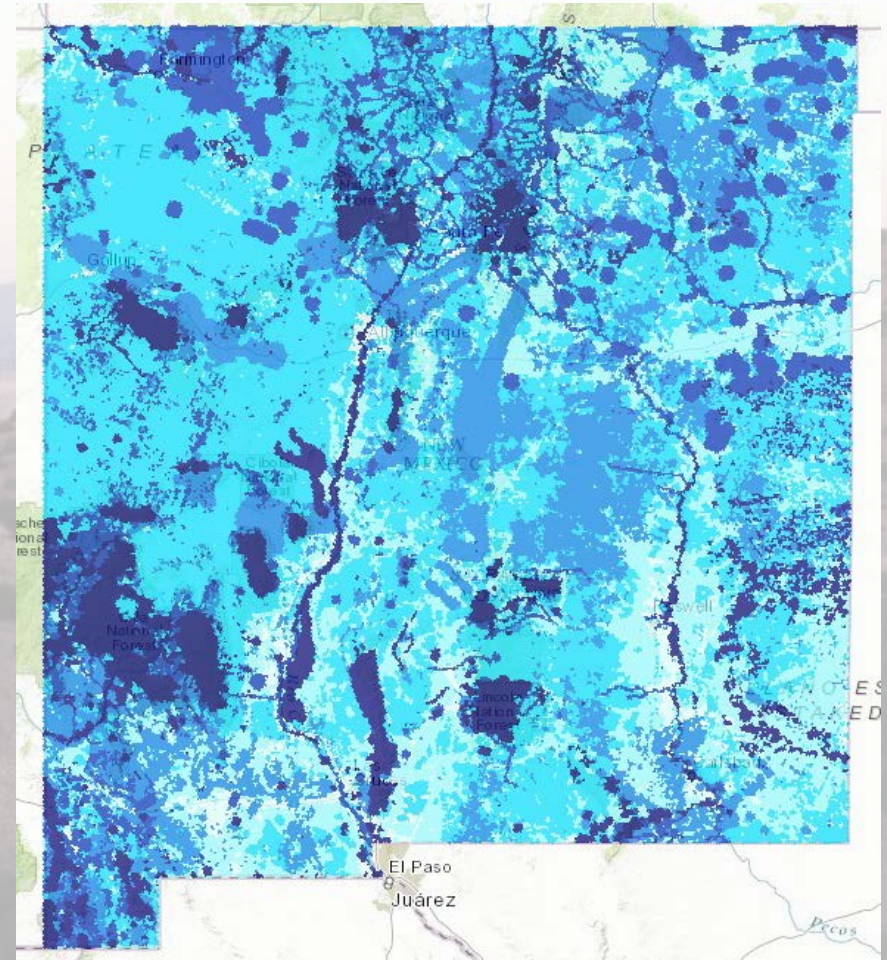
- Landscape level pre-planning tool
- Consistent, west-wide information
- Reduce time, costs, conflicts and surprises in project planning
- Inform conservation planning, investment, and implementation
- Ensure wildlife values are better incorporated into land use planning and decision-making

CHAT Websites

West-wide Website

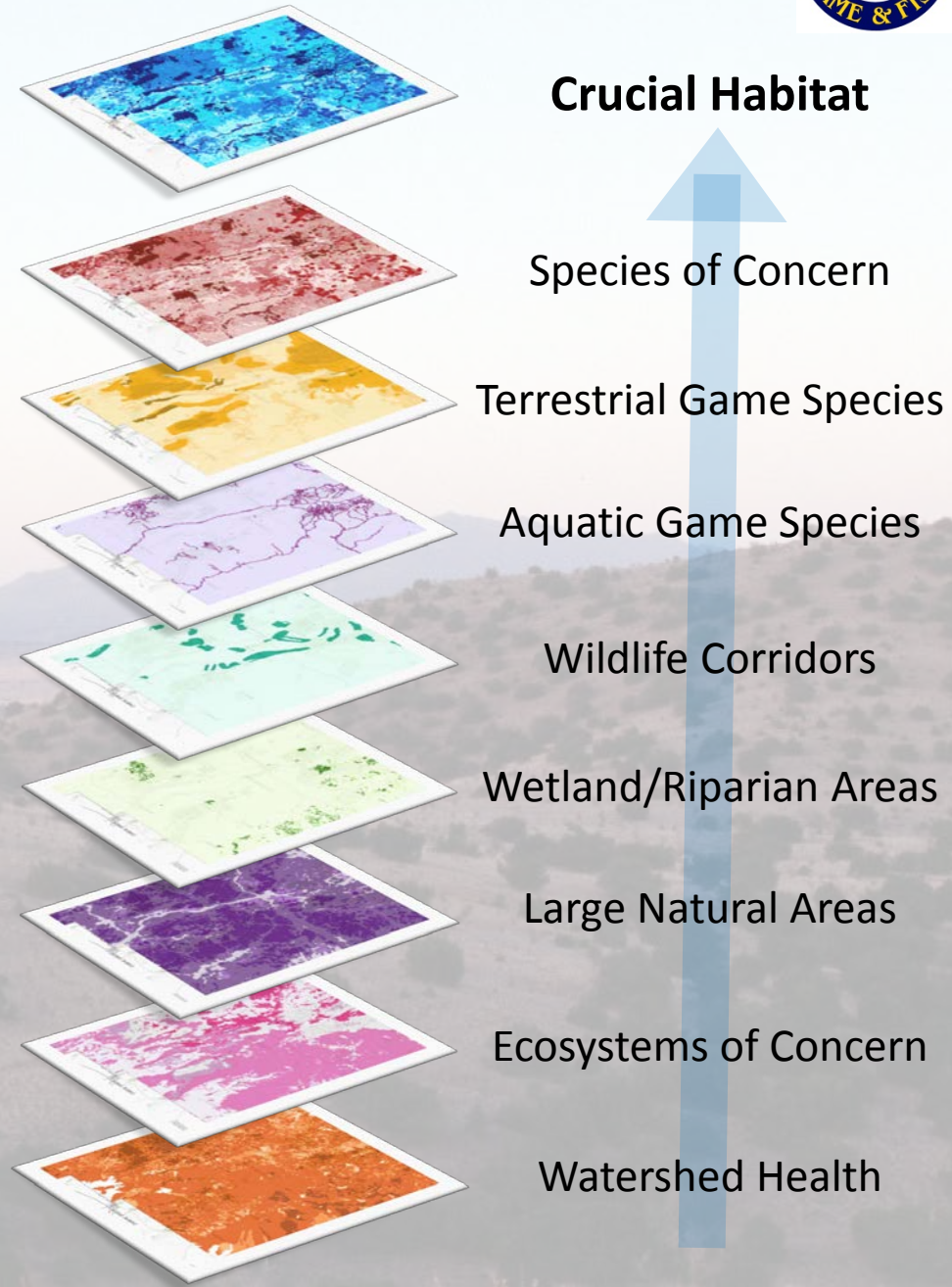


State Websites (e.g. New Mexico)



CHAT Data

- Eight data layers combined into one Crucial Habitat layer
- Categorized 1 mile hexagons across Western US.



CHAT Hexagons

WESTERN ASSOCIATION OF FISH AND WILDLIFE AGENCIES
Crucial Habitat Assessment Tool
 Mapping Fish and Wildlife Across the West

[MAP](#) [DATA](#) [STATES](#) [RESOURCES](#) [ABOUT](#) [FEEDBACK](#)

AK WEST
-
+

Layers
Select

Map Satellite

Crucial Habitat Rank

Feature Description

Hexagon ID: **2041450**

State: **New Mexico**

[View Metadata](#)

Click [here](#) to learn more about this state's CHAT site, or use the link below to go directly to the state CHAT.

Visit the State CHAT

Data Input Layer	Rank/Value*
Crucial Habitat Rank	1
Terrestrial Crucial Habitat	9999
Aquatic Crucial Habitat	9999
Species of Concern	1
Terrestrial Species of Concern	9999
Aquatic Species of Concern	9999
Landscape Condition	9999
Large Natural Areas	2
Natural Veg. Communities	4
Landscape Connectivity	9999

Google
Lat/Lng: 32.88, -106.10
Map data ©2016 Google Imagery ©2016 TerraMetrics
2 km
Terms of Use
Report a map error

New Mexico CHAT Data

Important Bird Areas

Terrestrial SOC (obs)

Terrestrial SOC (models)

Terrestrial Critical Habitat

Aquatic SOC (obs)

Aquatic Critical Habitat

Landscape Condition –
Small Blocks

Large Intact Blocks

Cougar Corridor Model

Playas

NM Outstanding Waters

NM Wetlands RAM

NFHAP

Big Game Habitat

Fishing Waters

Terrestrial SOC

Aquatic SOC

Landscape Integrity

Species Connectivity

ESOC

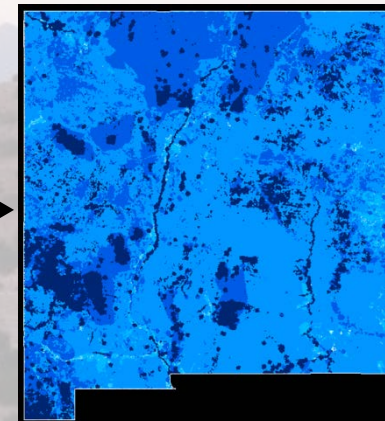
Riparian/Wetland

Aquatic Integrity

Terrestrial SERI

Aquatic SERI

Bighorn Sheep
Black Bear
Cougar
Elk
Mule Deer
Pronghorn Antelope



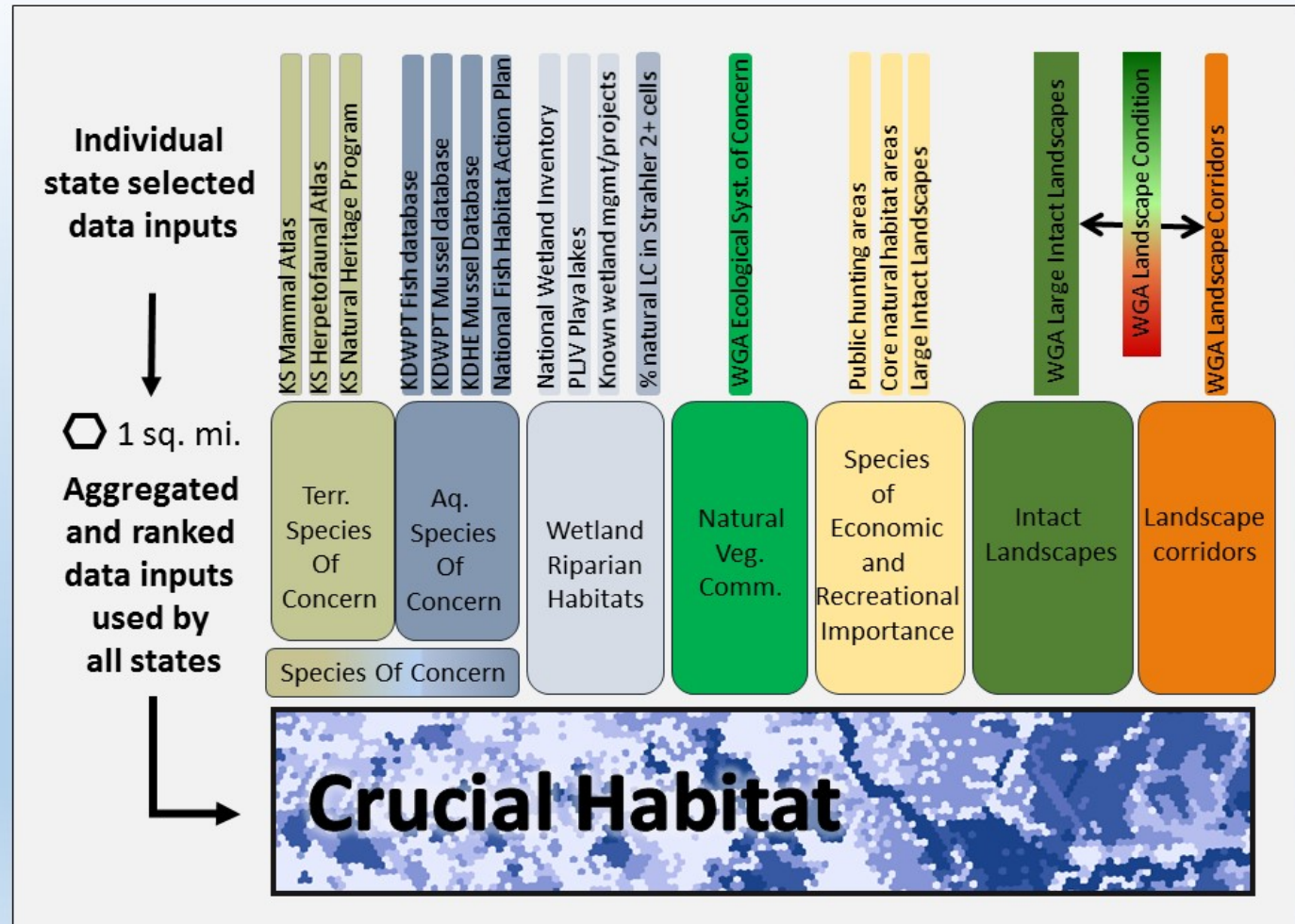
NM Crucial
Habitat Layer

Kansas CHAT Data

CHAT is:

State specific data aggregated into a common ranked hexagon framework

Crucial habitat in the general sense. Areas that are important because of 1 or more state identified reasons.



Ranking Crucial Habitat

Crucial Habitat Rank

Overall rank of rolled-up crucial habitat.

[View Metadata](#)



Most crucial

Least crucial

Crucial Habitat is ranked on a relative scale of 1-6. 1 indicates areas most likely to provide crucial habitat and conservation potential, depicted in darker blue hexagons on the map.

Data Accessibility

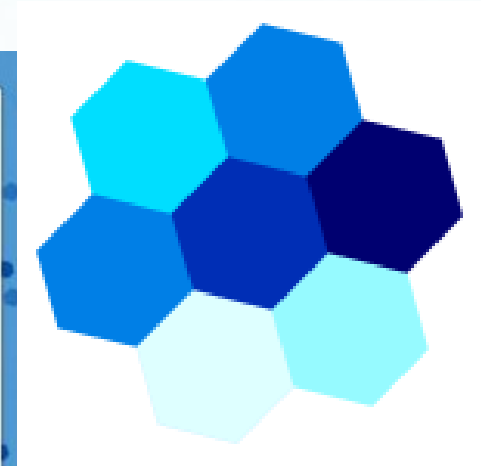
Feature Description

Hexagon ID: **283400**
State: **Washington**

To view more detailed information, visit the state CHAT site using the link below.

[Visit the State CHAT](#)

Attribute Name	Rank/Value
Terrestrial Species of Concern	0
Aquatic Species of Concern	0
All Species of Concern	2
Landscape Condition	0
Large Natural Areas	6
Natural Veg. Communities	0
Landscape Corridors	0
Landscape Condition Summary	0
Freshwater Integrity	0



Users can click on a hexagon to discover the data driving the crucial habitat ranking.

Data Accessibility

CHAT
WESTERN ASSOCIATION OF FISH AND WILDLIFE AGENCIES
MAP DATA STATES RESOURCES ABOUT FEEDBACK ?

Crucial Habitat Assessment Tool
Mapping Fish and Wildlife Across the West

DATA

Metadata

Search

By State -

Alaska

Arizona

California

Colorado

Idaho

KANSAS

Montana

Nebraska

Nevada

New Mexico

Oklahoma

Metadata: Aggregation Methods

State of Kansas

[Crucial Habitat Rank](#)

[Species of Concern](#)

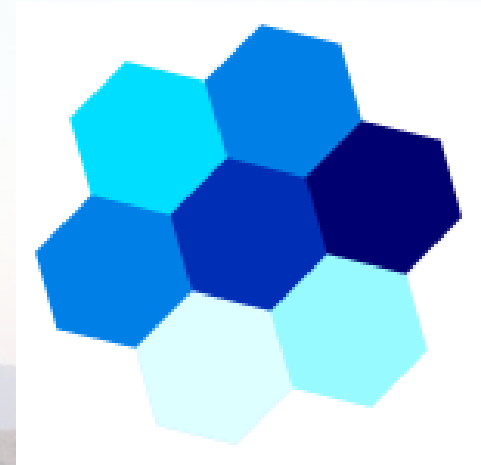
AGGREGATION METHOD: Categorical

AGGREGATION DETAILS: Terrestrial [SOC](#) OR Aquatic [SOC](#) if Aquatic [SOC](#) = 1

PRIORITY LEVEL 1: Federal Endangered species observation, or Federal Threatened species observation, or State Endangered species observation, or State Threatened species observation, or observation of a G1-G2 species, or observation of a state high priority species. OR Observations of State or Federal Threatened / Endangered aquatic species.

PRIORITY LEVEL 2: Federal Candidate species observation, or observation of a G-3 species, or observation of a S1, S2, or S3 species, or observation of a Species of Greatest Conservation Need ([SGCN](#)) ranked 4 or higher, or modeled habitat for a Federal Endangered, threatened, or Candidate species.

PRIORITY LEVEL 3: Modeled habitat for State endangered species, or modeled habitat for G1, G2, or G3 species, or modeled habitat for State high priority species.




Users can easily access crucial habitat category definitions, aggregation methods, and data sources.

Western Association of Fish and Wildlife Agencies CHAT

(<http://www.wafwachat.org/>)

MAP DATA STATES RESOURCES ABOUT FEEDBACK ?

 WESTERN ASSOCIATION OF FISH AND WILDLIFE AGENCIES
Crucial Habitat Assessment Tool
Mapping Fish and Wildlife Across the West

CHAT is designed to reduce conflicts and surprises during the planning process.

Quickly view the best available maps of crucial wildlife habitat in 16 Western states and connect to more detailed state habitat maps.
[Learn More >>](#)

[Learn About CHAT >>](#)
[Go to the Map >>](#)
[Get the Data >>](#)

NM Crucial Habitat Assessment Tool

(<http://nmchat.org/>)



Visualizing sensitive species and habitats across New Mexico



NM CHAT is:

- a conservation information system for energy development planners, natural resources managers, and conservation practitioners.
- a tool to better incorporate wildlife values, sensitive animals and plants, and important ecosystem features into land use decision-making to reduce conflicts and surprises.
- a collaborative project between the New Mexico Department of Game & Fish, Natural Heritage New Mexico at the University of New Mexico, and the Western Governors' Association's Wildlife Council.

Use NM CHAT to quickly identify the location of New Mexico's crucial wildlife habitat

Go to Map



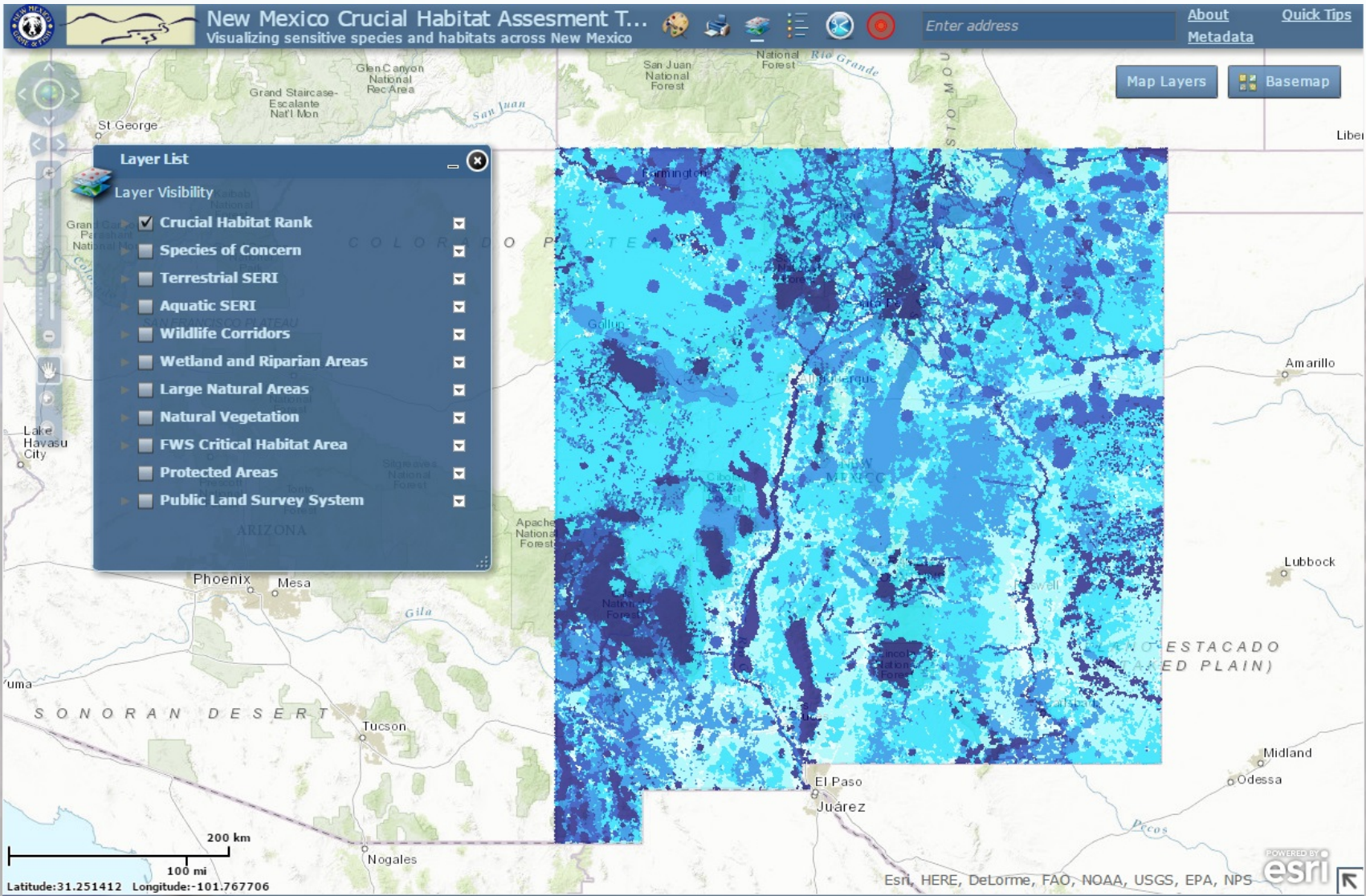
NM CHAT provides:

- landscape-level information on species and habitats.
- a Crucial Habitat Rank at a square-mile scale based on:
 - Species of Concern (animals and plants)
 - Wildlife Corridors
 - Terrestrial Species of Economic and Recreational Importance
 - Aquatic Species of Economic and Recreational Importance
 - Freshwater Integrity (watershed status)
 - Wetland and Riparian Areas
 - Large Natural Areas
 - Natural Vegetation Communities of Concern
- supplemental spatial data to aid conservation planning.
- links to other information tools.

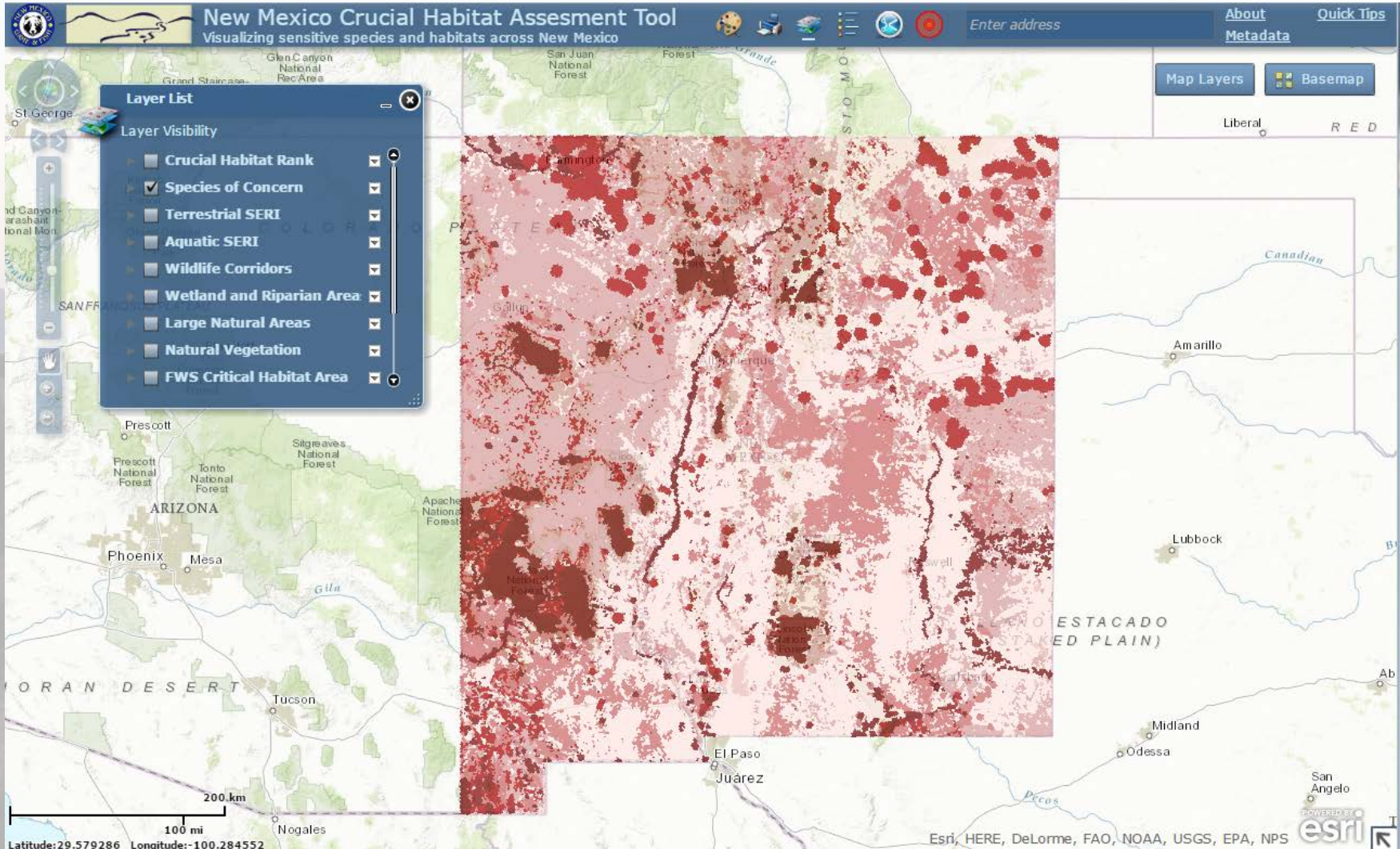


See [Data](#) for details.

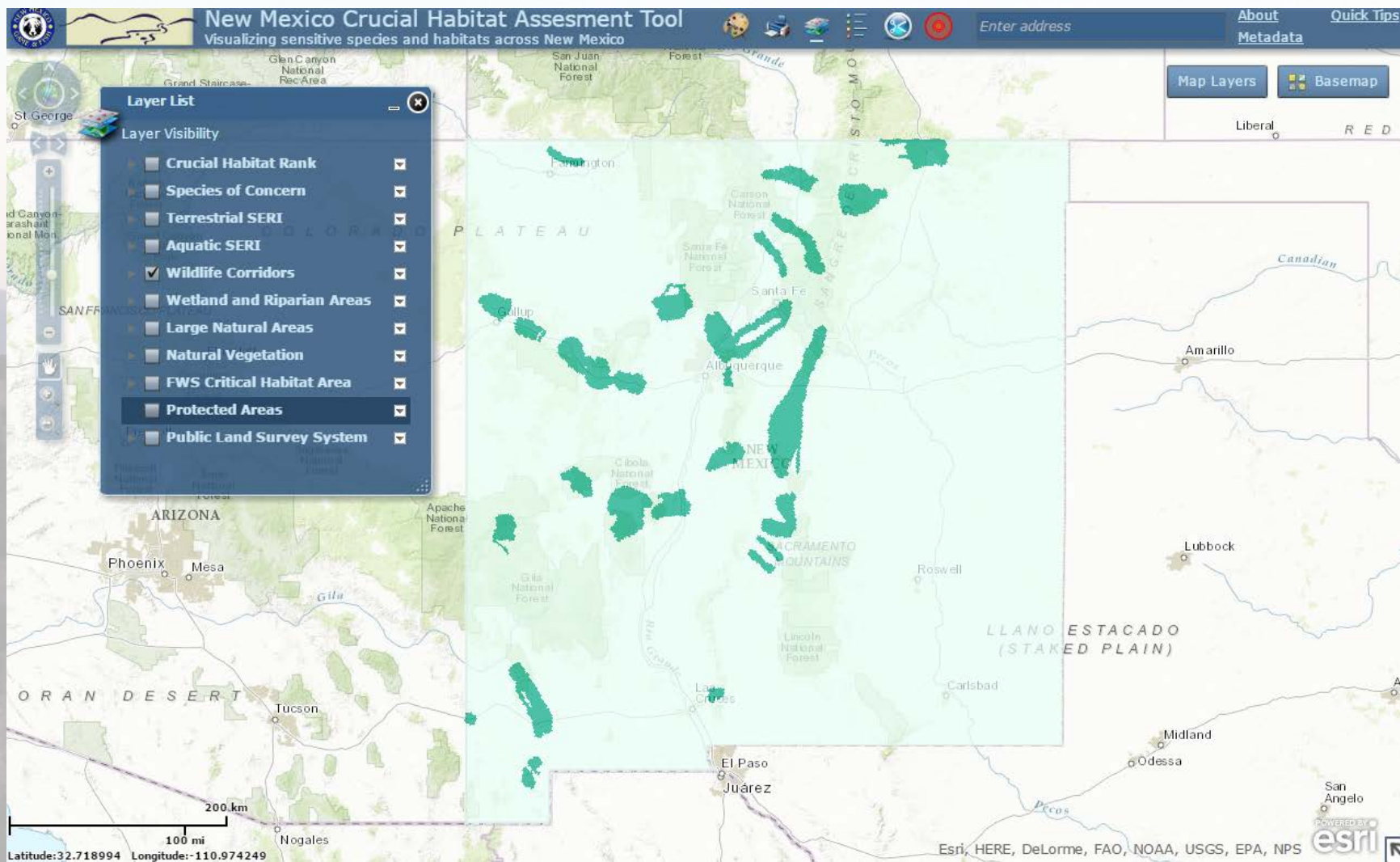
NM CHAT Data Layers



NM CHAT Data Species of Concern

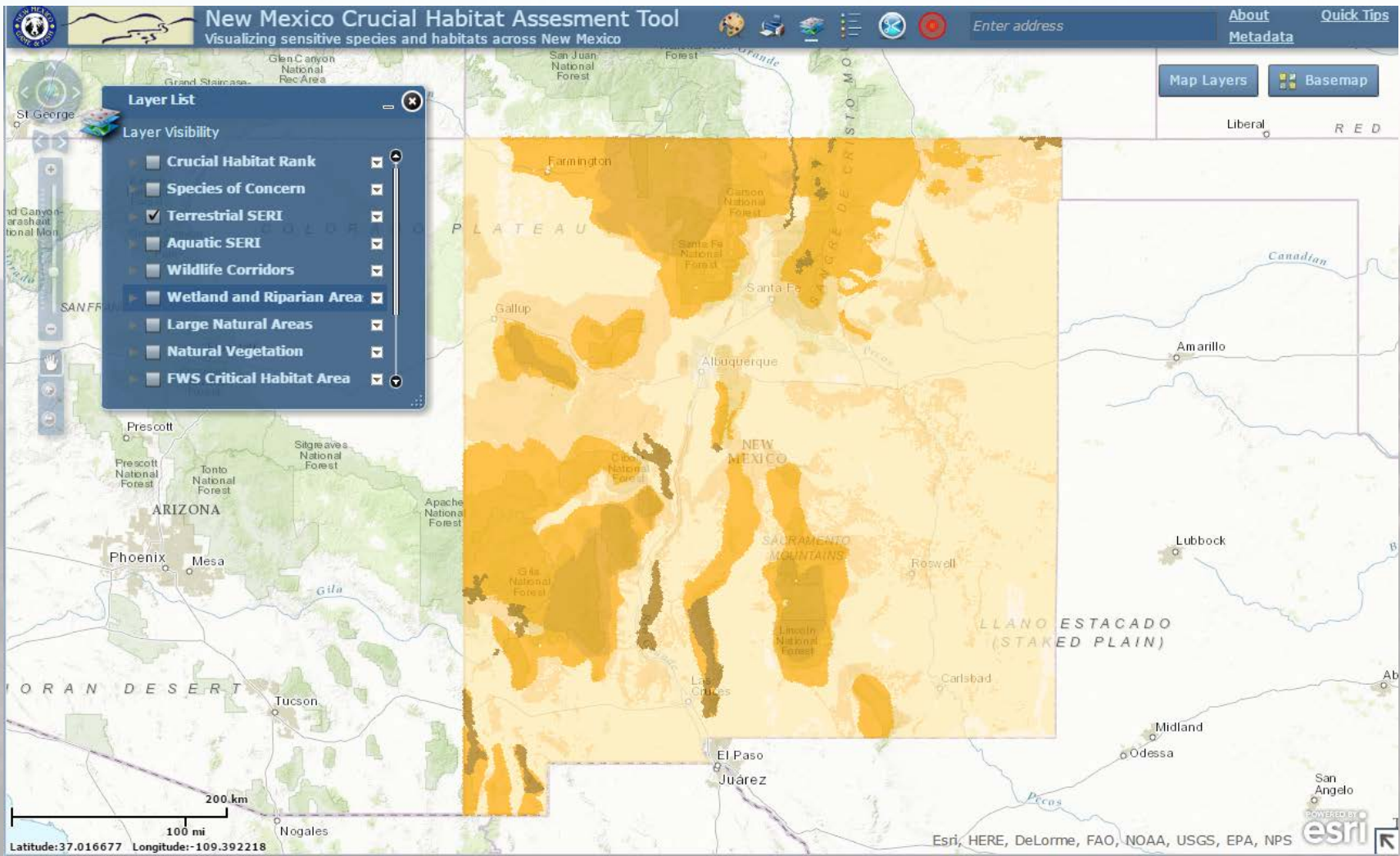


NM CHAT Data Wildlife Corridors

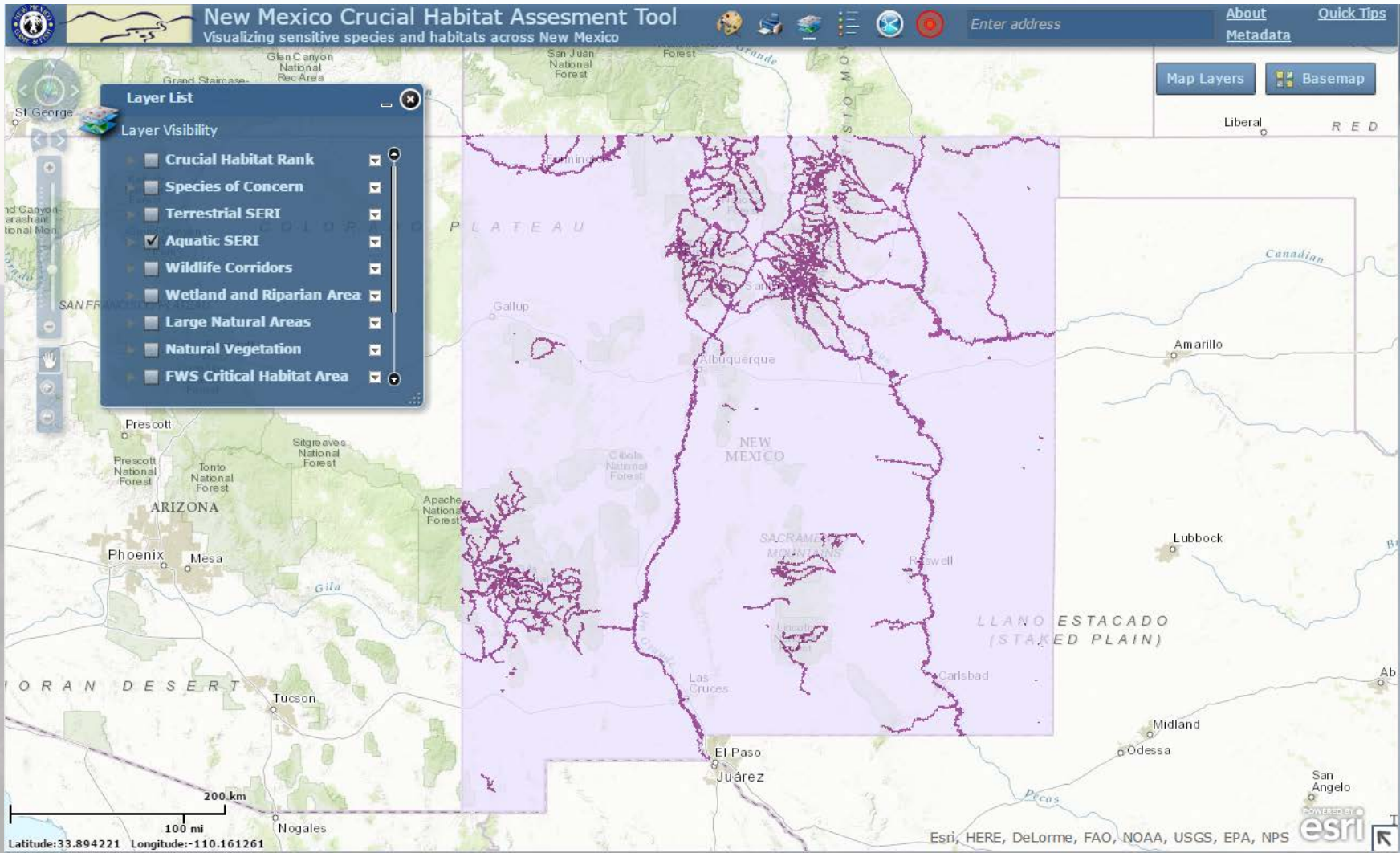


NM CHAT Data

Terrestrial Game Species (SERI)

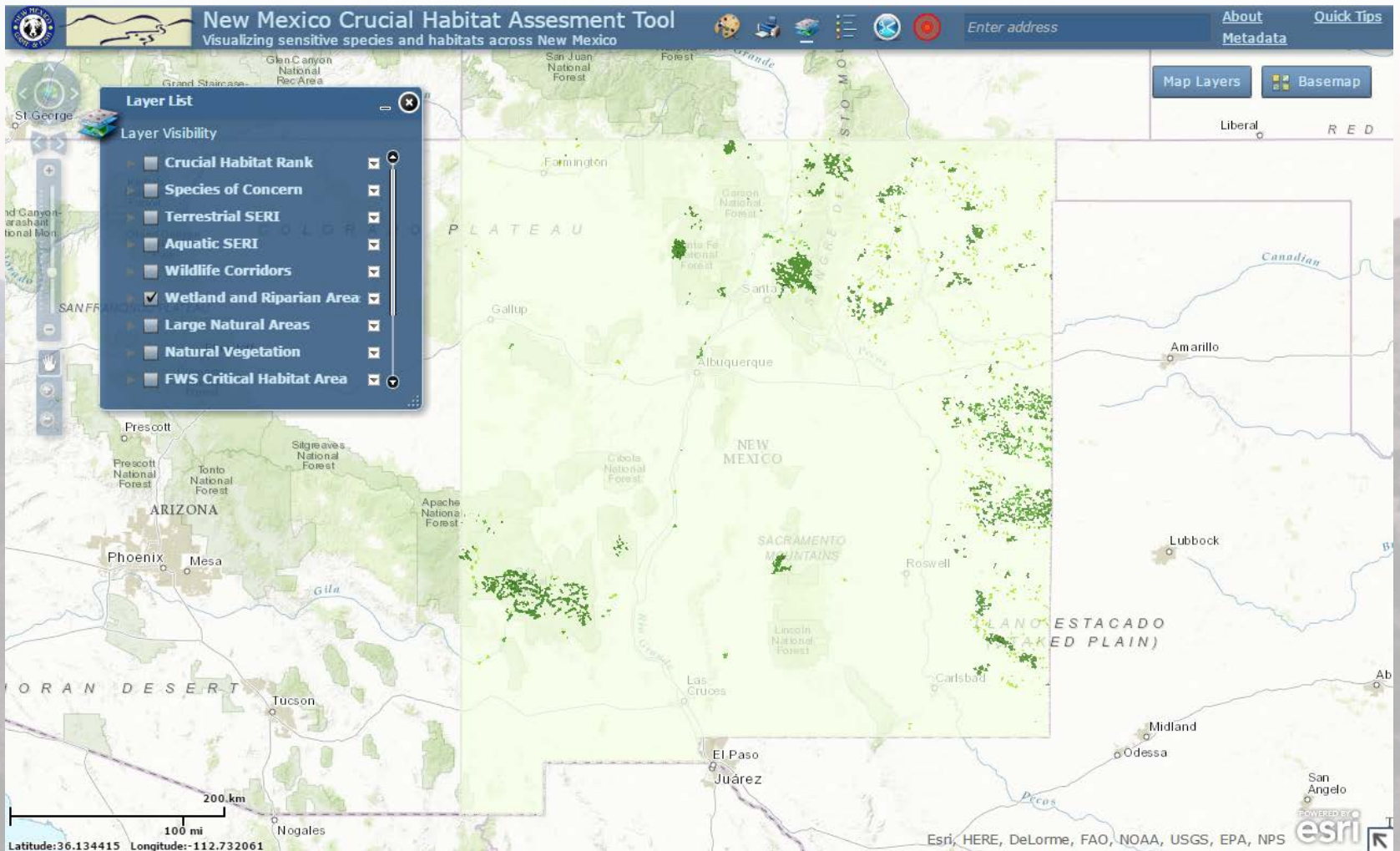


NM CHAT Data Aquatic Game Species (SERI)



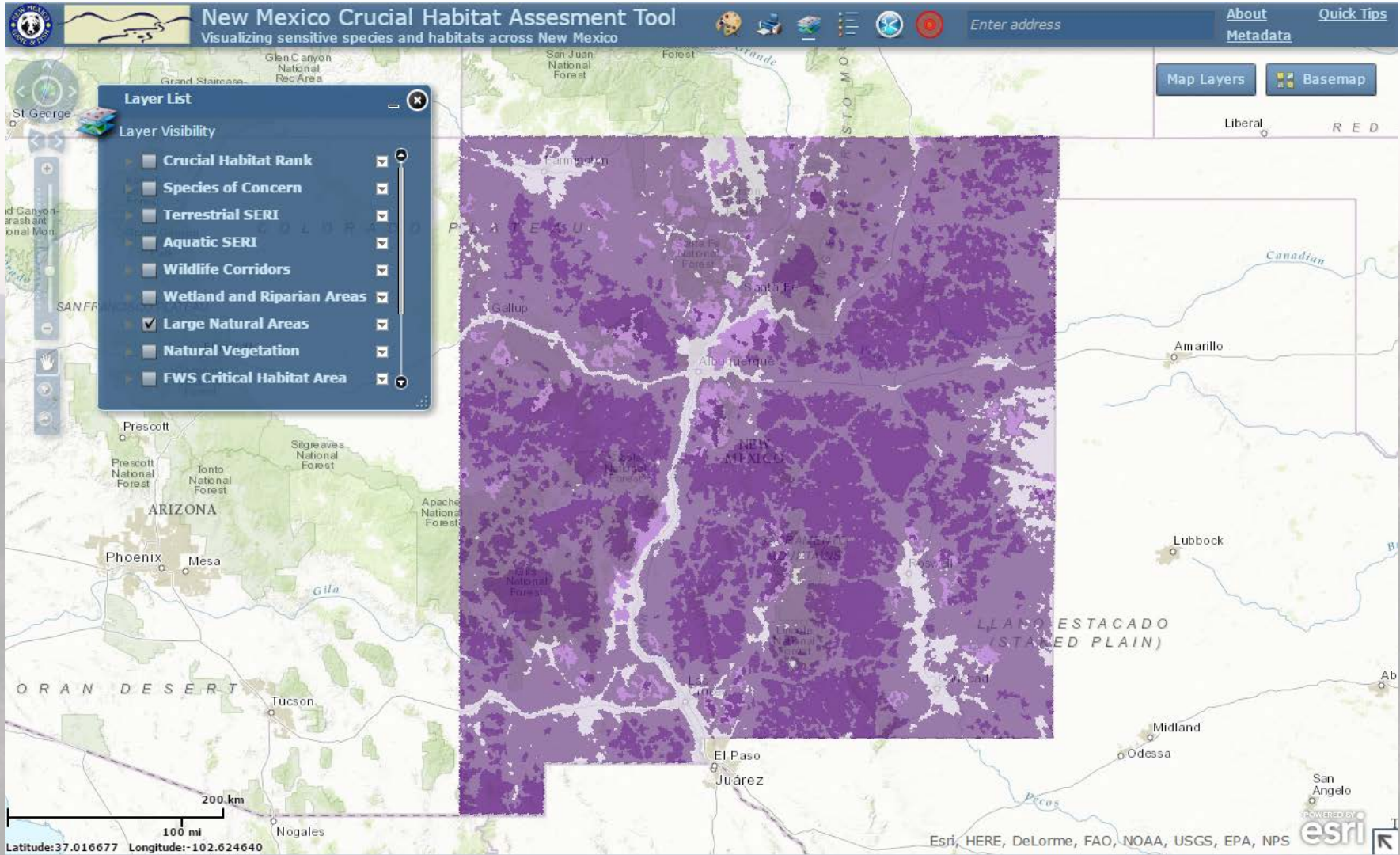
NM CHAT Data

Wetland and Riparian Areas

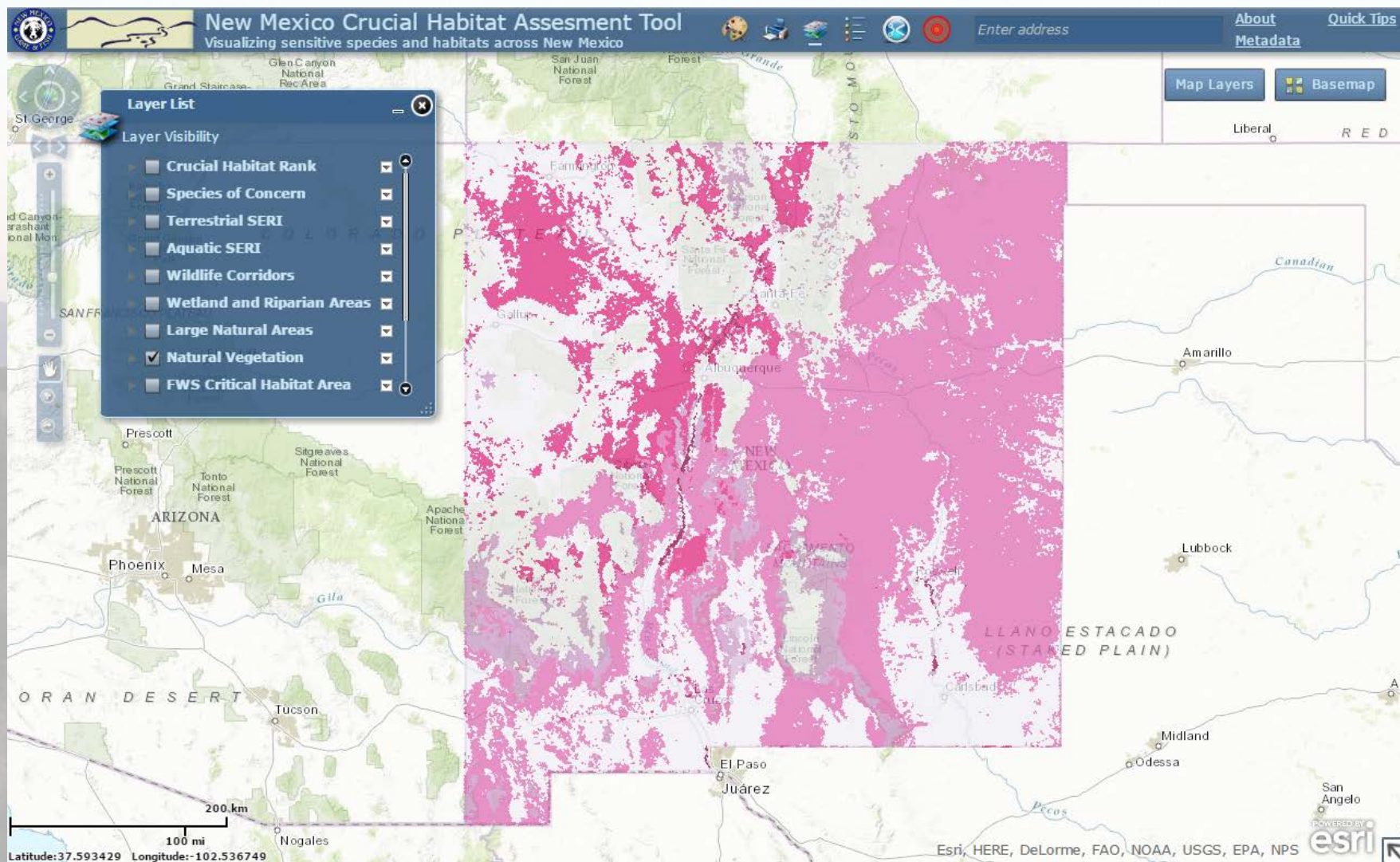


NM CHAT Data

Large Natural Areas

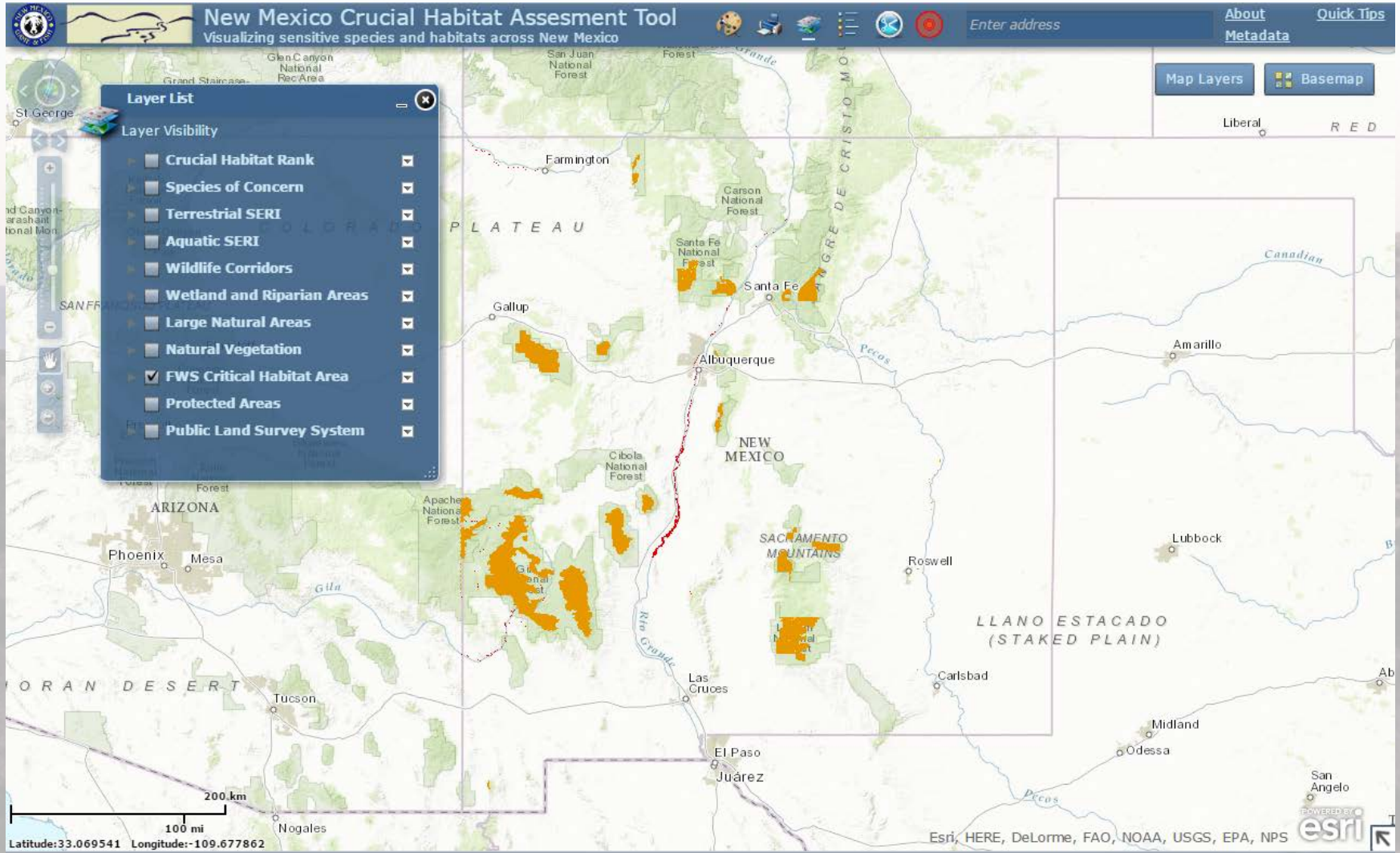


NM CHAT Data Natural Vegetation

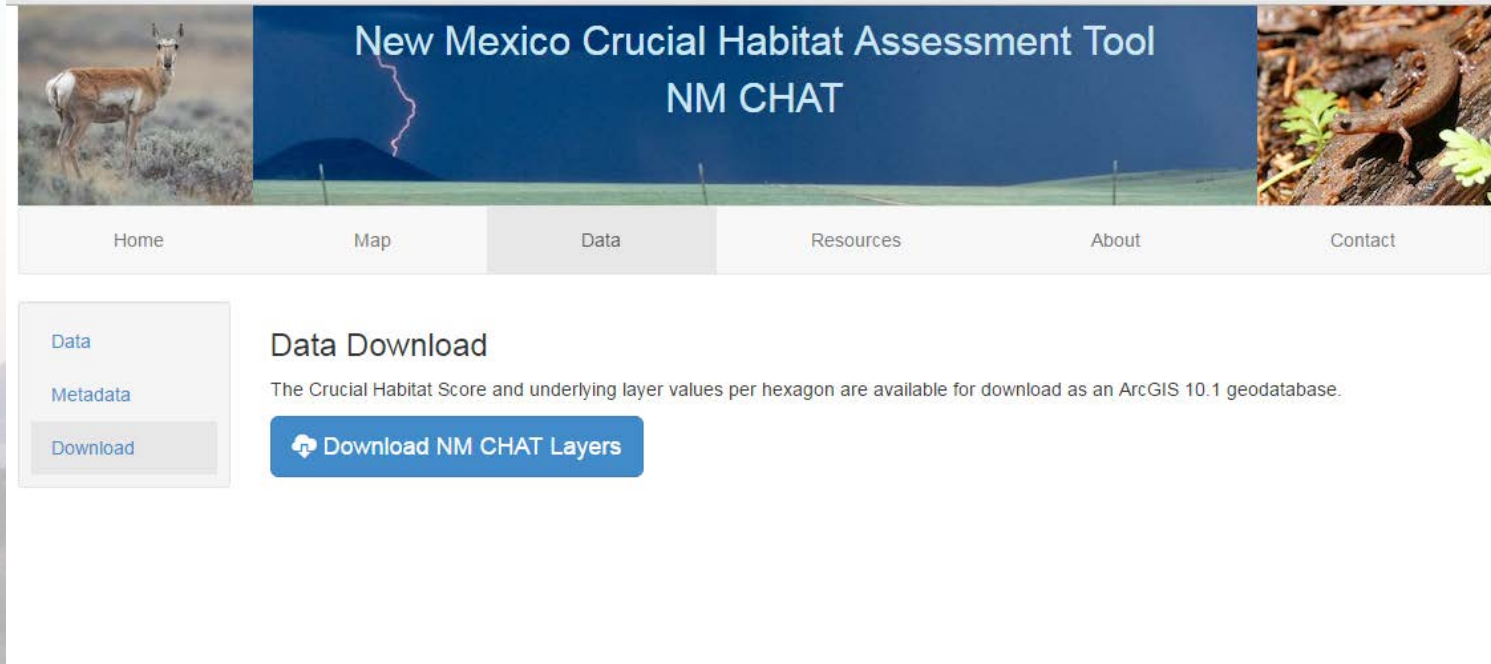


NM CHAT Data

FWS Critical Habitat



Download Data




New Mexico Crucial Habitat Assessment Tool
NM CHAT

Home Map Data Resources About Contact

Data
Metadata
Download

Data Download

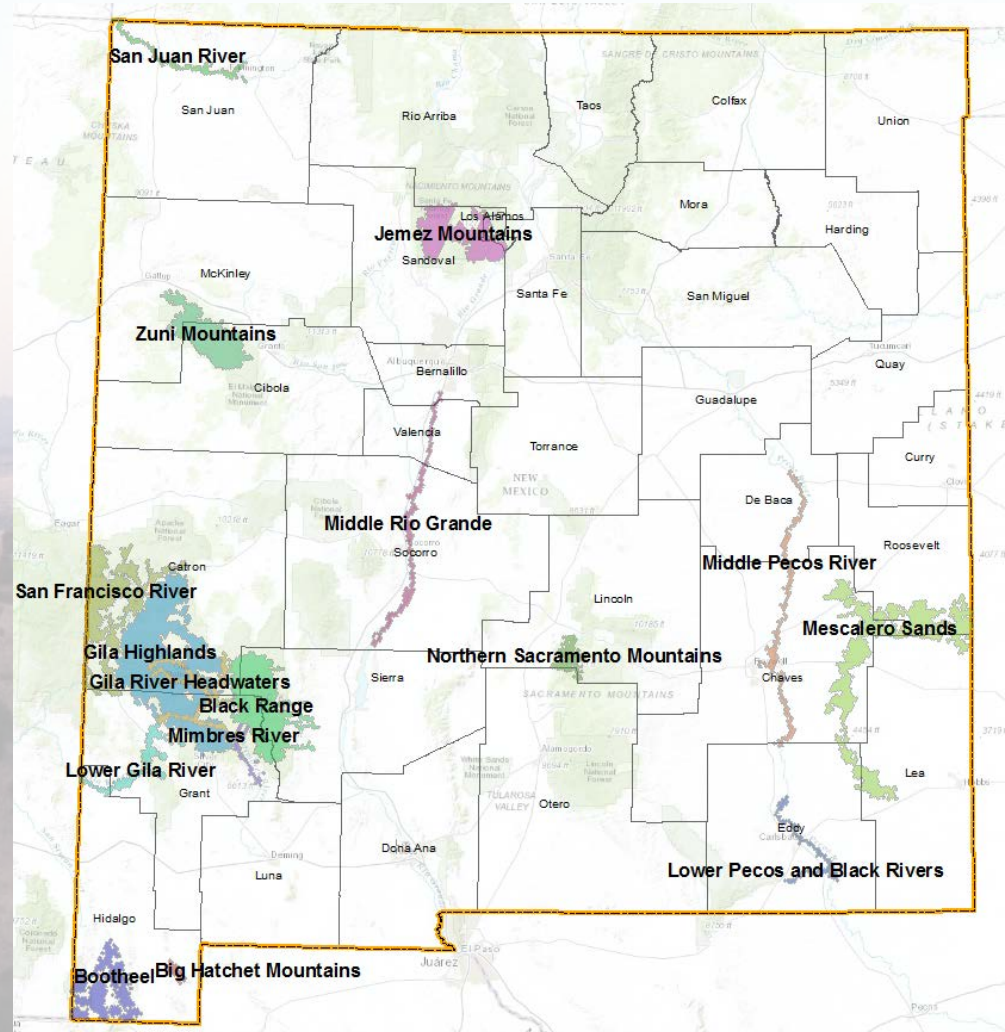
The Crucial Habitat Score and underlying layer values per hexagon are available for download as an ArcGIS 10.1 geodatabase.

 Download NM CHAT Layers

From <http://nmchat.org/data-download.html>

Future CHAT Updates

- State Wildlife Action Plan Conservation Opportunity Areas



Potential DoD CHAT Applications

- Military Training Routes
- INRMP

Headquarters 49th Fighter Wing

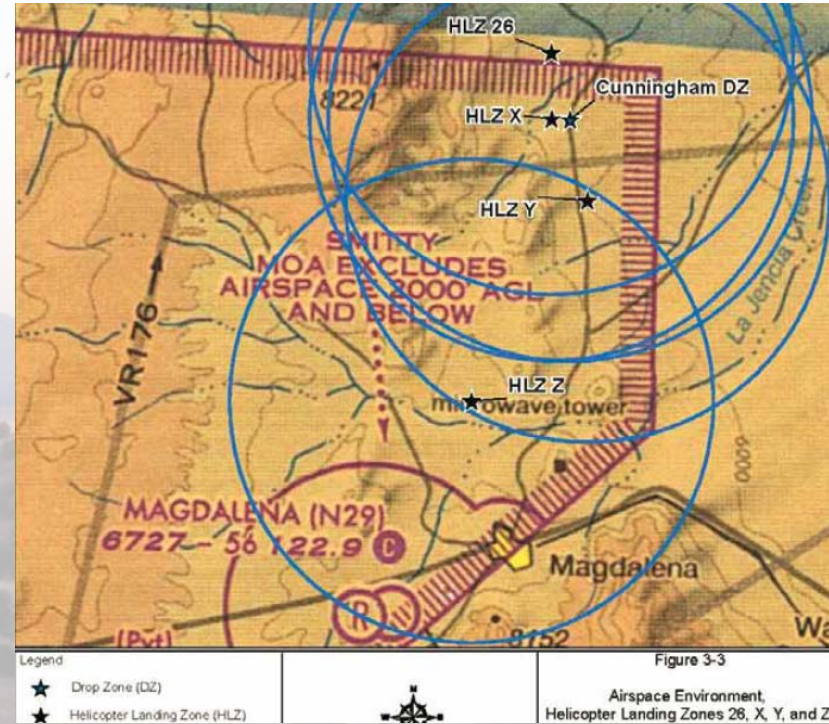
Holloman Air Force Base, New Mexico



INTEGRATED NATURAL RESOURCE MANAGEMENT PLAN HOLLOMAN AIR FORCE BASE, NEW MEXICO

For Plan Period

January 1999 - January 2004



Resources

- Contacts

- Rayo McCollough, rayo@unm.edu, 505 277-3822 xtn. 225
- Chuck Hayes, chuck.hayes@state.nm.us, 505-476-8114

- Websites

- West-wide CHAT <http://www.wafwachat.org/>
- New Mexico CHAT <http://nmchat.org/>

