



## 2015 Secretary of Defense Environmental Awards Environmental Quality, Overseas Installation Award

Since 1962, the Department of Defense (DoD) has honored individuals, teams, and installations for their outstanding achievements and innovative work protecting the environment while sustaining mission readiness. The 2015 Secretary of Defense Environmental Awards recognize accomplishments from October 1, 2012 to September 30, 2014. A diverse panel of judges with relevant expertise representing federal and state agencies, academia, and the private sector evaluated all nominees to select one winner for each of the nine categories that cover six subject areas: natural resources conservation; environmental quality; sustainability; environmental restoration; cultural resources management; and environmental excellence in weapon system acquisition.

### About the Environmental Quality, Overseas Installation Award

The Environmental Quality, Overseas Installation award recognizes the efforts of overseas installations of all types (industrial or non-industrial) to ensure mission accomplishment and protection of human health in the areas of environmental planning, waste management, and compliance with environmental laws and regulations (e.g., Clean Air Act, Clean Water Act, Safe Drinking Water Act, etc., or equivalent overseas governing standards). Meeting or exceeding all environmental requirements not only enhances the protection of our environmental assets, but also sustains DoD's ability to effectively train and maintain readiness. The 2015 winner of the Environmental Quality, Overseas Installation award is *Marine Corps Base Camp Smedley D. Butler* in Okinawa, Japan.

### About Marine Corps Base Camp Smedley D. Butler

Marine Corps Base Camp Smedley D. Butler (MCB Butler) is a leader in enhancing environmental quality while sustaining the Marine Corps' ability to train and maintain readiness in Okinawa, Japan. MCB Butler is the base support and provides training areas for III Marine Expeditionary Force (III MEF). III MEF is a rapidly-deployable Marine-Air-Ground Task Force, able to conduct operations ranging from humanitarian assistance to amphibious assault and high intensity combat. MCB Butler is also the command support element for Marine Corps Installations Pacific, which encompasses all Marine Corps Installations in Hawaii, Japan, and Korea. MCB Butler supports over 32,000 active duty military and civilians, and encompasses more than 45,000 acres.

MCB Butler's environmental program proactively supports operational efficiency and mission readiness. Specifically, the installation is able to



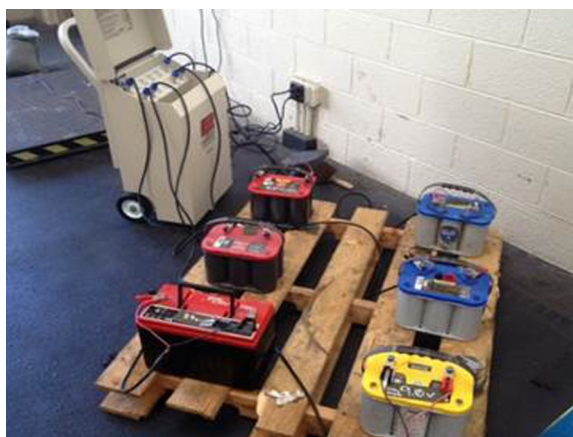
**Okinawa:** *The island of Okinawa, Japan is a strategic training location for the Marine Corps and supports forging a strong and stable Pacific. Okinawa is known for its beautiful beaches, pristine water, and rich marine resources – with more than 340 coral species. MCB Butler's innovative soil erosion efforts have been instrumental in protecting this vital coral habitat.*

complete plans and environmental analyses using in-house staff, which saves time and money. In addition, MCB Butler implements extensive natural and cultural resources conservation programs that are critical to not only training on base, but also to effectively manage the land entrusted to the Marine Corps. MCB Butler's numerous partnerships and collaborations with local municipalities and agencies reflect the success of their stakeholder interaction. MCB Butler's environmental program has been instrumental in improving relations between the people of Okinawa and the Marine Corps.

### Major Accomplishments in FY 2013-2014

- **Program Management:** Achieved an 18.5% contaminated absorbent reduction, resulting in \$14,000 disposal cost savings in FY 2014.
- **Technical Merit:** Completed a large-scale cultural resources survey at the Ie Shima Training Facility, marking the first extensive systematic archeological survey to take place at the facility.
- **Orientation to Mission:** Provided assistance to the U.S. Air Force and tenant units to complete erosion control and revegetation projects to ensure continued range operations to support the warfighter.
- **Transferability:** Implemented the Hawker Battery Reuse Program and generated a cost savings of more than \$220,000 in its first year of operation.
- **Stakeholder Involvement:** Participated in the Okinawa Environmental Forum, affording the opportunity for MCB Butler and the Okinawa Prefectural Government to come together and share environmental initiatives and projects occurring across the island.
- **Project Impact:** Achieved a 66% diversion rate of non-hazardous solid waste from the waste stream in FY 2013 through expanded pick-up locations and increased recyclable collection.

For information on past winners, please go to: [www.denix.osd.mil/awards](http://www.denix.osd.mil/awards).



**Hawker Battery Reuse Program:** MCB Butler launched its Hawker Battery Reuse Program in FY 2013 and has significantly reduced the amount spent on new battery purchases. Typically, 70% of waste batteries turned in are recouped by their waste handling technicians. Since the program started, no conditioned battery has been sent back through the waste disposal process.



**2014 Environmental Forum:** MCB Butler and Okinawa Prefectural Government came together for the first Environmental Forum in 11 years. The forum allowed both organizations to present various environmental projects that occurred throughout Okinawa.