



# Wallum Lake Training Site, Rhode Island

July 2018

## Background

DoD uses and manages operational ranges to support national security objectives and maintain the high state of operational readiness essential to its mission requirements. The Department conducts non-regulatory, proactive, and comprehensive operational range assessments (ORAs) to support the long-term sustainability of these ranges while protecting human health and the environment. The purpose of an ORA is to determine if there is a release or substantial threat of a release of munitions constituents from an operational range to an off-range area that exceeds an applicable regulatory standard or creates a potential unacceptable risk to human health or the environment.

The Army ORA effort was developed to address DoD requirements detailed in DoD Directive 4715.11 (10 May 2004) and DoD Instruction 4715.14 (15 November 2018). The overall objective of the ORA is to assess operational ranges/range complexes to determine if an off-range MC release or substantial threat of an off-range MC release exists; if an off-range MC release exists, does it exceed an applicable regulatory reporting standard; and if an MC release or substantial threat of a release exists, determine whether it creates a potentially unacceptable risk to off-range human health or the environment.

## Range Overview

Wallum Lake Training Site is located approximately 7 miles northwest of Burrillville, Rhode Island. The training site is owned by the State of Rhode Island and is currently included in the Planning Resource for Infrastructure Development and Evaluation (PRIDE) database under PRIDE Code 44B40. The installation has never been used for military training, and there are no current plans to acquire additional acreage for the installation.

Wallum Lake Training Site is comprised of one

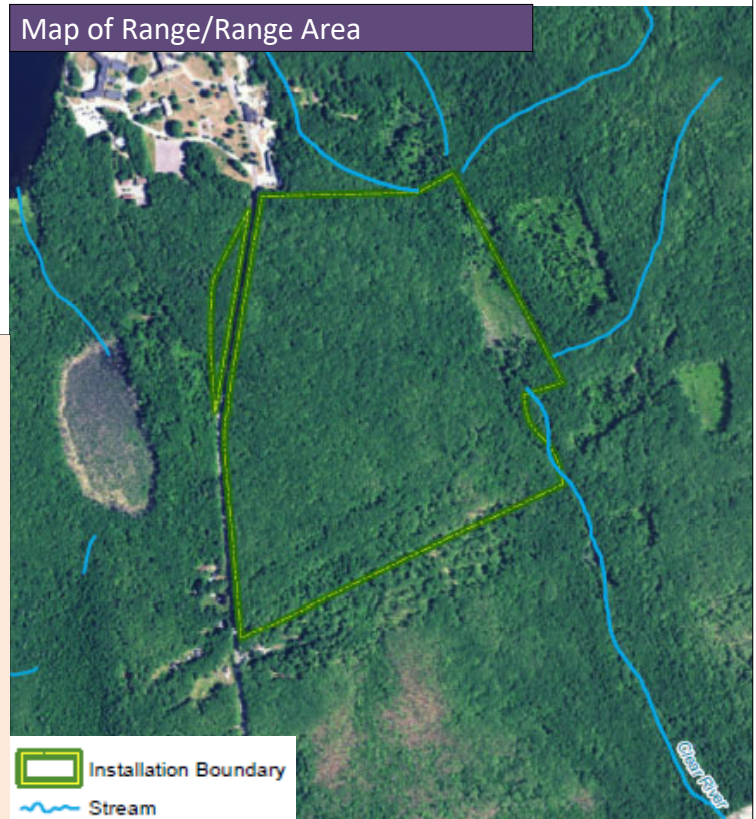
## Operational Range Assessment Findings (07/2018)

No sources of MC were identified at Wallum Lake Training Site. As such, MC are not migrating from the installation at concentrations that pose an unacceptable risk to human health or the environment.

## Next Steps

Wallum Lake Training Site should be placed into the Periodic Review cycle to be re-assessed in five years.

Map of Range/Range Area



Range Overview (continued)

operational range area totaling 138 acres. The site has never been used for any military training involving live or non-live fire munitions.

Phase I (2018)

In 2018, a Phase I was conducted at Wallum Lake Training Site. Based on the completion of the CSM, it is unlikely that munitions constituents of concern MC could migrate off-installation via surface water or groundwater at concentrations that create an unacceptable risk to human health and/or the environment. No source is present on Wallum Lake TS due to the lack of current and historical military munitions use (both live- and non-live-fire) on the installation.

For more information on Wallum Lake Training Site, contact <https://ri.ng.mil/Contact-Us-FAQ/>  
For more information on the DoD Operational Range Assessment Program visit <https://www.denix.osd.mil/orap/home/>