



**U.S. AIR FORCE**

**FINAL**

**OPERATIONAL RANGE ASSESSMENT REPORT  
SCHRIEVER SPACE FORCE BASE**

**UNITED STATES AIR FORCE  
OPERATIONAL RANGE ASSESSMENT PROGRAM**

**Prepared for:  
Schriever Space Force Base, Colorado  
United States Space Force  
and  
Air Force Civil Engineer Center  
Joint Base San Antonio – Lackland, Texas**



**Prepared by:  
EA Engineering, Science, and Technology, Inc., PBC  
Hunt Valley, Maryland**

**Under Contract to  
United States Army Corps of Engineers – Sacramento District  
Contract No. W912DR-15-D-0014  
Delivery Order No. W9123819F0063**

**April 2020**



# Operational Range Assessment Schriever Space Force Base

Air Force Operational Range Assessment Program

April 2020

## Background

DoD uses and manages operational ranges to support national security objectives and maintain the high state of operational readiness essential to its mission requirements. The Department conducts non-regulatory, proactive, and comprehensive operational range assessments (ORAs) to support the long-term sustainability of these ranges while protecting human health and the environment. The purpose of an ORA is to determine if there is a release or substantial threat of a release of munitions constituents from an operational range to an off-range area that exceeds an applicable regulatory standard or creates a potential unacceptable risk to human health or the environment.

The USAF Operational Range Assessment Program (ORAP), established to comply with DoD policy, sets forth procedures for consistently conducting ORAs throughout the Air Force. The USAF ORAP assessment methodology uses an installation-wide approach to verify the ORAP inventory and accomplish range-specific assessments. An Air Force ORA is comprised of two primary phases: Qualitative Assessment, Phase 1 and Quantitative Assessment, Phase 2 (if required).

- A Qualitative Assessment, Phase 1, encompasses records review, interviews, and a visual survey.
- A Quantitative Assessment, Phase 2, encompasses records review, interviews, visual survey, and environmental media sampling.

## Installation Overview

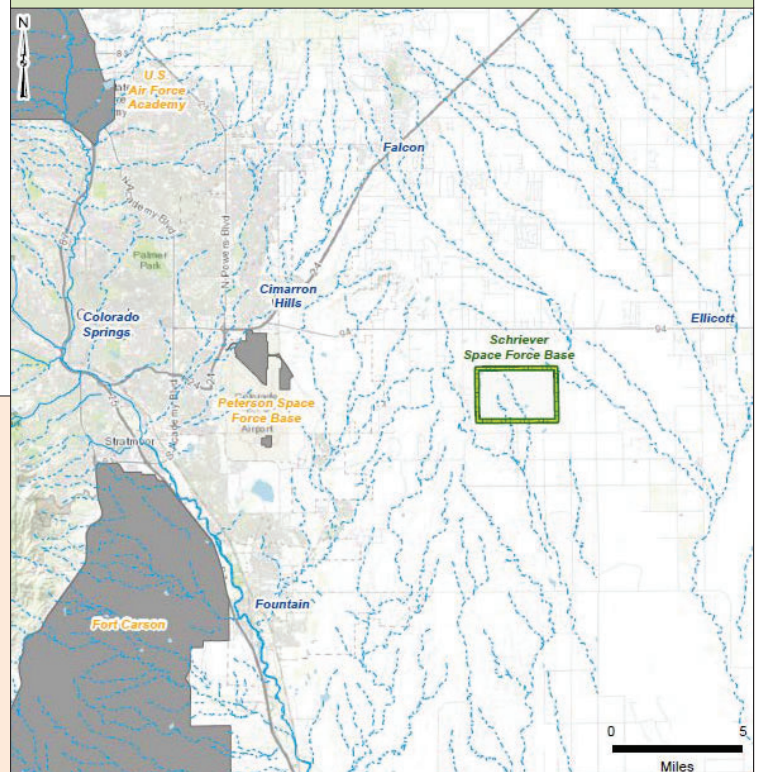
Schriever Space Force Base (SFB) is located in central El Paso County, Colorado, approximately 13 miles east of Colorado Springs. Schriever SFB occupies approximately 3,840 acres of U.S. Government-owned land. Colorado State Highway 94 provides primary access to the base.

## ORAP Findings: April 2020 ORA Report

- Migration mechanisms were deemed unlikely to transport munitions constituents (MC) to off-range areas.
- No potential off-range migration of MC exists for the two areas assessed at Schriever SFB.
- No unacceptable risks to human health or the environment were identified for the two areas evaluated at Schriever SFB.

## Next Steps

Schriever SFB is scheduled to be assessed in accordance with USAF and DoD policy specifying periodic assessment at least every five years or sooner if significant changes occur that may impact assessment decisions.



### Installation Overview Continued

During implementation of the ORAP at Schriever SFB, two ranges were determined to be eligible and assessed under the USAF ORAP – the Base X Training Area and the Outdoor Shoot House.

The following summarizes USAF ORAP efforts for the Base X Training Area and the Outdoor Shoot House. This is the first ORA for the Base X Training Area and the Outdoor Shoot House.

### Base X Training Area Assessment Overview

The Base X Training Area was established around 2006 and is located in the south-central portion of Schriever SFB. The range encompasses 6.40 acres and is currently used as a Prime BEEF training area to train the 50th CES in deployment skills. No munitions are used during current Prime BEEF training. The Base X Training Area was historically used between 2006 and 2017 for training with Simunition® rounds and small caliber blanks on a limited basis during firing-team-maneuver and marksmanship training, and shoot, move, communicate (SMC) training.

In 2020, the initial Phase 1 ORA was completed. Limited MC source areas were identified at the Base X Training Area. Due to the limited availability of MC source, MC are unlikely to be available for transport via air, soil, surface water/sediment, or groundwater mechanisms. Therefore, no complete exposure pathways or risks were identified for the Base X Training Area.

### Outdoor Shoot House Assessment Overview

The Outdoor Shoot House was established in 2012 and is located in the southeastern corner of Schriever SFB. The range encompasses 13.43 acres. The range is temporarily inactive but was formerly used for shoot house exercises and SMC training. Shoot house exercises involving the use of Simunition® rounds were conducted between 2012 and 2015, and SMC training with Simunition® rounds was conducted from 2012 to January 2020. SMC training is expected to begin again in 2 to 3 months.

In 2020, the initial Phase 1 ORA was completed. Limited MC source areas were identified at the Outdoor Shoot House. Due to the limited availability of MC source, MC are unlikely to be available for transport via air, soil, surface water/sediment, or groundwater mechanisms. Therefore, no complete exposure pathways or risks were identified for the Outdoor Shoot House.

**For more information on this assessment or the Air Force Operational Range Assessment Program contact the Ranges Subject Matter Expert, Technical Branch, Environmental Quality Directorate, Air Force Civil Engineer Center**  
**For more information on the DoD Operational Range Assessment Program visit <https://denix.osd.mil/orap/home/>**