



Indiana Weekend Training Site, Pennsylvania

May 2018

Background

The Department of Defense (DoD) uses and manages operational ranges to support national security objectives and maintain the high state of operational readiness essential to its mission requirements. The Department conducts non-regulatory, proactive, and comprehensive operational range assessments (ORAs) to support the long-term sustainability of these ranges while protecting human health and the environment. The purpose of an ORA is to determine if there is a release or substantial threat of a release of munitions constituents (MC) from an operational range to an off-range area that exceeds an applicable regulatory standard or creates a potential unacceptable risk to human health or the environment.

The Army National Guard (ARNG) ORA effort was developed to address DoD requirements detailed in DoD Directive 4715.11 (10 May 2004) and DoD Instruction 4715.14 (15 November 2018). The overall objective of the ORA is to assess operational ranges/range complexes to determine if an off-range MC release or substantial threat of an off-range MC release exists; if an off-range MC release exists, does it exceed an applicable regulatory reporting standard; and if an MC release or substantial threat of a release exists, determine whether it creates a potentially unacceptable risk to off-range human health or the environment.

Operational Range Assessment Findings (05/2018)

The 2018 Periodic Review determined that MC were Unlikely to migrate off-range at levels that pose an unacceptable risk to human health or the environment.

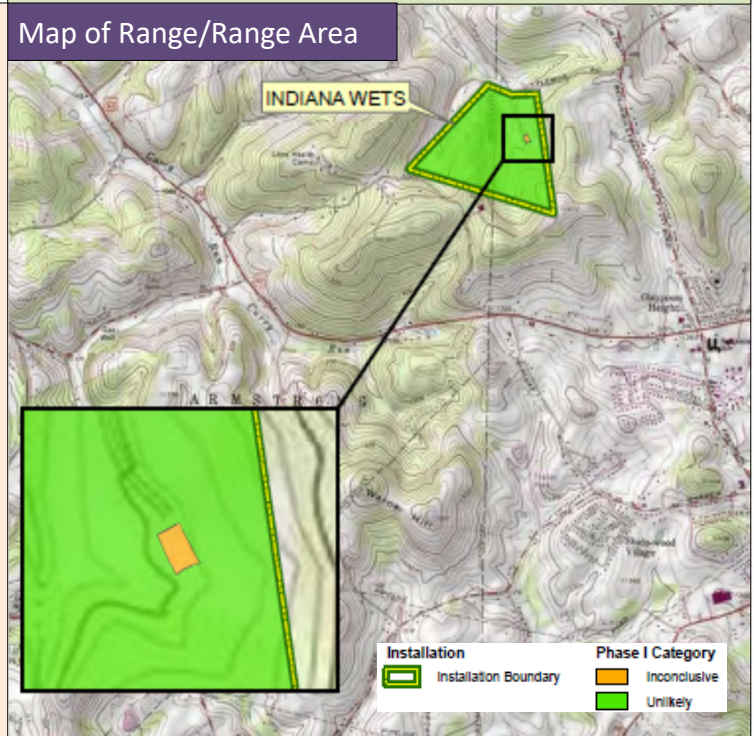
Next Steps

The installation's operational ranges should be placed into the Periodic Review cycle to be re-assessed in five years.

Installation Overview

Indiana Range Weekend Training (WET) Site is located in Indiana County, Pennsylvania along the border of Armstrong and White Township, approximately 30 miles east of Pittsburgh. The installation was originally established in 1937 when the land, owned by a non-profit association was leased to the Commonwealth of Pennsylvania. Today, the installation used for inactive duty training by the Pennsylvania ARNG, Indiana University of Pennsylvania ROTC and State law enforcement. Training is conducted on a monthly basis throughout the year with varying levels of activity. The Indiana Range WET site includes one small arms range (totaling 0.44 acres) and one maneuver and training area (totaling 165.04 acres) totaling 165.48 acres

Map of Range/Range Area



Previous ORA Investigations

In 2008, a Phase I ORA was conducted to determine if MC were migrating from Indiana WET Site's two operational ranges at concentrations that posed an unacceptable risk to human health and/or the environment. The assessment determined that MC from the installation's small arms range had the potential to migrate off-range within surface water and groundwater at concentrations that posed an unacceptable risk to off-range receptors. As such, this range was recommended for further evaluation as part of a Phase II assessment.

The 2011 Phase II evaluated the Inconclusive small arms range situated within the Cheese Run Watershed. Based on information from installation personnel, live-fire training on the small arms range had discontinued in 2006. No plans were in place to resume live-fire training. In addition, groundwater was concluded to not be a viable pathway based on the clayey nature of the soil, and depth to water table (approximately 100 feet [ft]) made it unlikely for MC to infiltrate to the water table. As a result, sampling efforts focused on surface water and sediment as the primary pathway for MC migration. Five sampling events were conducted, two during the wet season under clear weather conditions, two during the dry season under clear weather conditions, and one during a storm in the wet season. Sample results indicated concentrations of MC were above project action limits (PAL). However, due to the intermittent nature of the primary surface water pathway, and the lack of new source loading, it was determined no MC is migrating off-range at concentrations that pose an unacceptable risk to off-range receptors.

Periodic Review (2017)

As part of the 2017 Periodic Review, each component of the conceptual site model (CSM) developed during the previous assessments were reviewed. The Periodic Review determined that no munitions use had occurred at the installation since 2006. Additionally, no changes to associated pathways or receptors had occurred.

As a result, the Unlikely categorizations from the Phase II remain valid.

For more information on Indiana Weekend Training Site, contact RA-MVPUBLICAFFAIRS@pa.gov
For more information on the DoD Operational Range Assessment Program visit <https://www.denix.osd.mil/orap/home/>