

**FINAL
OPERATIONAL RANGE ASSESSMENT PROGRAM
PHASE I QUALITATIVE ASSESSMENT REPORT
SPARTA TRAINING AREA
SPARTA, ILLINOIS**

MARCH 2009

Prepared for:

UNITED STATES ARMY CORPS OF ENGINEERS, BALTIMORE DISTRICT
P.O. Box 1715
Baltimore, Maryland 21203

and

UNITED STATES ARMY ENVIRONMENTAL COMMAND
Aberdeen Proving Ground, Maryland 21010

Prepared by:

MALCOLM PIRNIE, INC.
701 Town Center Drive
Suite 600
Newport News, Virginia 23606



EXECUTIVE SUMMARY

The United States (U.S.) Army is conducting qualitative assessments at operational ranges to meet the requirements of Department of Defense policy and to support the U.S. Army Sustainable Range Program. The operational range qualitative assessment (hereinafter referred to as Phase I Assessment) is the first phase of the U.S. Army Operational Range Assessment Program. This Phase I Assessment evaluates the operational range area at Sparta Training Area (TA) to assess whether further investigation is needed to determine if potential munitions constituents of concern (MCOC) are or could be migrating off-range at levels that may pose an unacceptable risk to human health or the environment. In conducting the Phase I Assessment, MCOC sources, potential off-range migration pathways, and potential off-range human and ecological receptors are evaluated as appropriate.

Sparta TA is located approximately 45 miles southeast of St. Louis, Missouri, within Sparta, Randolph County, Illinois. According to the Army Range Inventory Database-Geodatabase (ARID-GEO [2006]), Sparta TA has a total TA area of 2635.26 acres and a total operational range area of 2620.49 acres. The operational area consists of 14 operational ranges (light training and maneuver areas). The 14.77-acre other than operational area identified in ARID-GEO (2006) is located in the southeast corner of the training area.

Light maneuver training activities are conducted at the operational ranges at Sparta TA. A review of available records and background data, as well as interviews with Illinois Army National Guard personnel, indicates that training activities at Sparta TA do not involve, and historically have not involved, the use of military munitions. Potential sources of MCOC were not identified at Sparta TA; therefore, potential off-range migration pathways and potential off-range human and ecological receptors were not evaluated. The 14 training and maneuver areas at Sparta TA are categorized as Unlikely.

TAs with operational ranges where no munitions or only small caliber blanks have been utilized are categorized as Unlikely. That is, based on a review of available information, there is sufficient evidence to show that due to the lack of munitions use there are no known releases or source-receptor interactions that could present an unacceptable risk to human health or the environment. Ranges categorized as Unlikely are required to be re-evaluated at least every five years. Re-evaluation may occur sooner if significant changes (e.g., change in range operations or site conditions, regulatory changes) occur that affect determinations made during this Phase I Assessment. **Table ES-1** summarizes the Phase I Assessment findings.

Table ES-1: Summary of Findings and Conclusions for Sparta TA

Category	Total Number of Ranges and Acreage	Source(s)	Pathway(s)	Human and Ecological Receptors	Conclusions
Unlikely	14 operational ranges; 2620.49 acres	No source—no current or historical use of live-fire military munitions	Not evaluated (no source identified)		Re-evaluate during the five-year review.

ABBREVIATIONS/ACRONYMS

ARID-GEO	Army Range Inventory Database-Geodatabase
CSM	Conceptual Site Model
DMAIL	Department of Military Affairs Illinois
DoD	Department of Defense
GIS	Geographic Information System
ILARNG	Illinois Army National Guard
JFHQ-IL	Joint Force Headquarters-Illinois
MCOG	Munitions Constituents of Concern
OMM	Office of Mines and Minerals
ORAP	Operational Range Assessment Program
TA	Training Area
U.S.	United States
USACE	United States Army Corps of Engineers

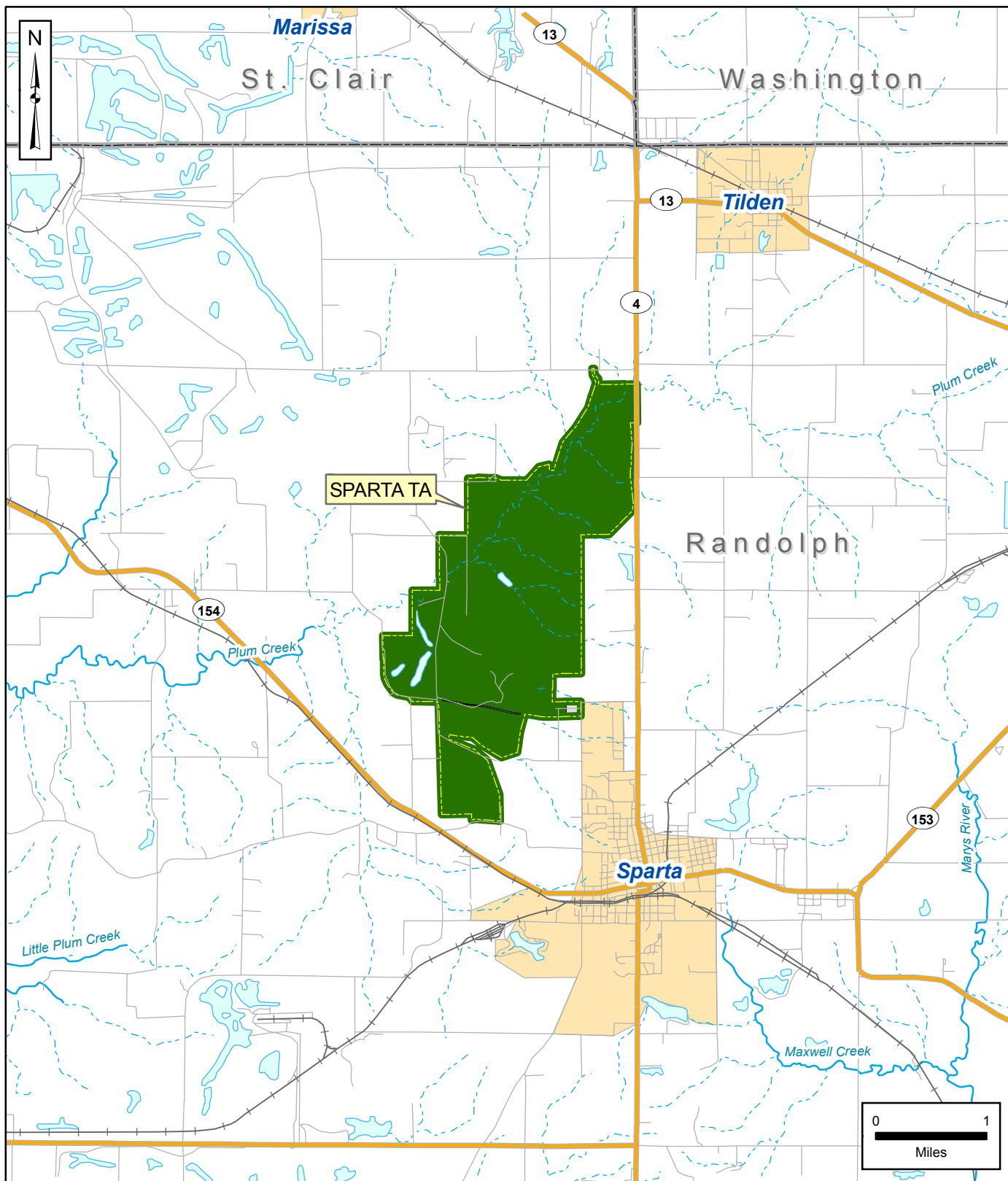


**MALCOLM
PIRNIE**

**Operational Range Assessment Program
Phase I Qualitative Assessment
Sparta TA, IL**

Figure 2-1

Sparta TA Location and Operational Range Area



Installation

- Installation Boundary
- Operational Area
- Other than Operational Area

Hydrology

- River/Stream (Perennial)
- Stream (Intermittent)
- Water Body

Transportation

- Major Road
- Local Road
- Railroad

Administrative

- Urbanized Area
- County Boundary

Data Sources:

AEC, ARID-GEO, 2006
ESRI, StreetMap USA, 2005

Date: March 2009

Prepared By: Malcolm Pirnie, Inc.

Prepared For: U.S. Army

Contract: W912DR-05-D-0004